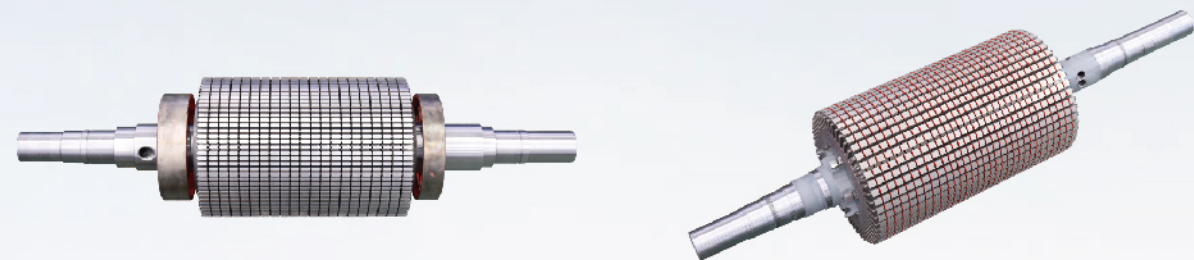




WIND POWER GENERATOR

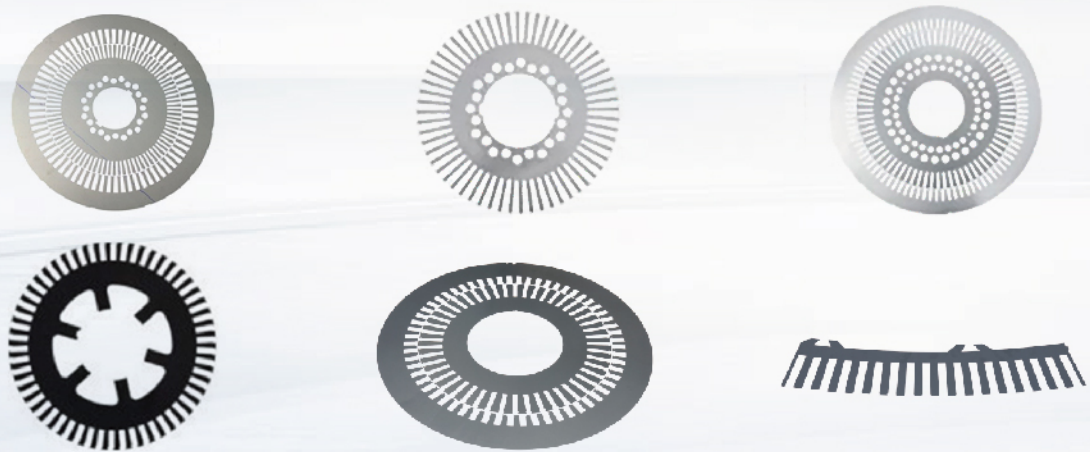
风力发电机



风力发电机转子铁芯
Rotor Cores



风力发电机定子铁芯
Stator Cores

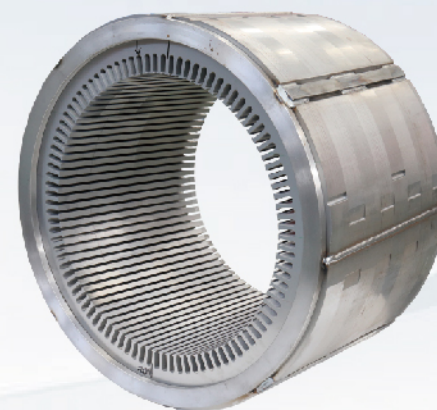


风力发电机定转子冲片
Stator/ Rotor Lamination

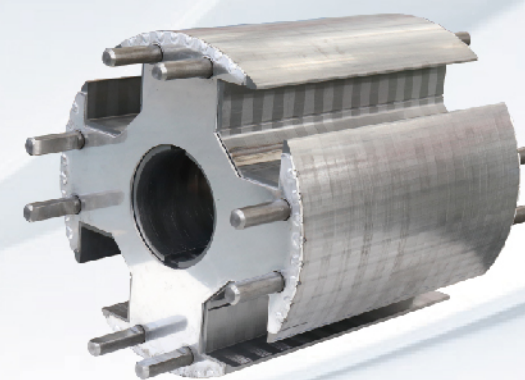


DIESEL GENERATOR

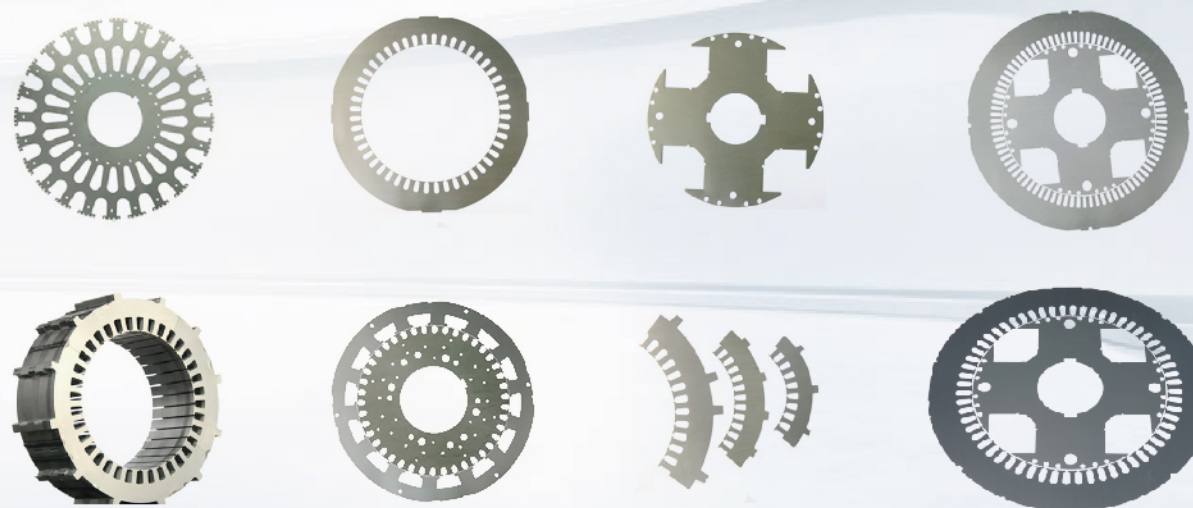
柴油发电机



柴油发电机定子铁芯
Stator Cores



柴油发电机转子铁芯
Rotor Cores



柴油发电机定转子冲片
Stator/ Rotor Lamination



MV/HV MOTOR

中高压电机

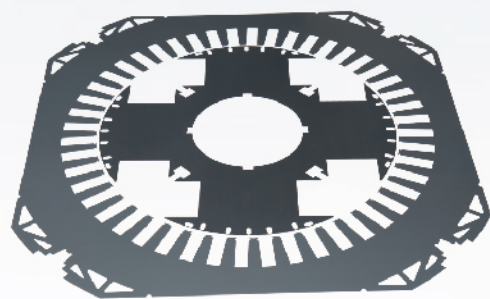


RAILWAY MOTOR

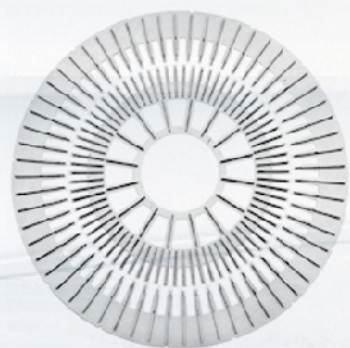
轨道电机



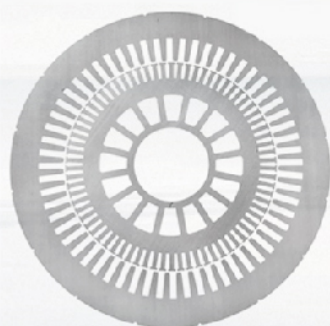
中高压电机定子铁芯
Stator Cores



中高压电机定转子冲片
Rotor Cores



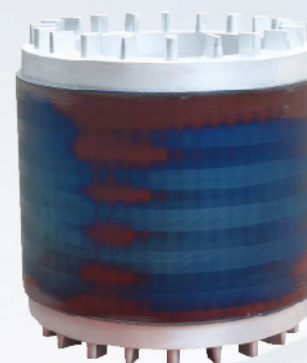
中高压电机点焊端板
Spot Welding End Plate



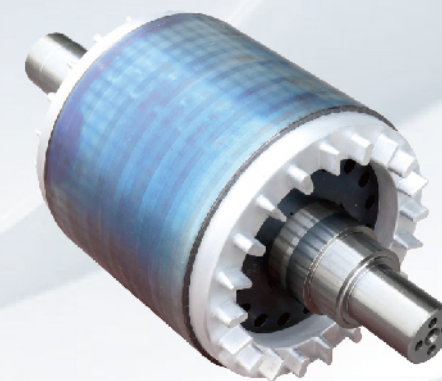
中高压电机定转子冲片
Stator/ Rotor Lamination



中高压电机螺柱焊接端板
Stud Welding End Plate



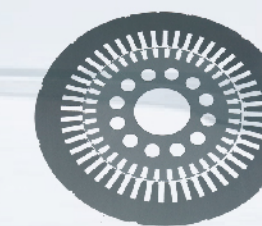
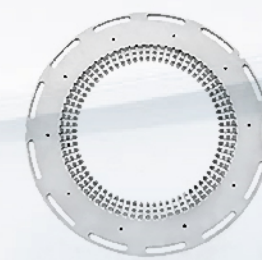
轨道电机转子铸铝
Aluminium Casting of Rotor



轨道电机转子铸铝穿轴
Aluminium Casting in Shaft of Rotor



轨道电机定子铁芯
Stator Cores

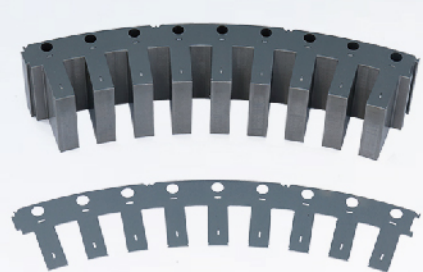


轨道电机定转子冲片 / 端板
Stator/ Rotor Lamination/ End Plate

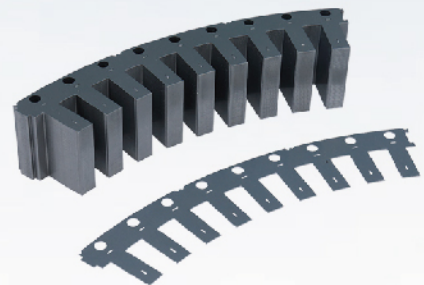


ELEVATOR MOTOR

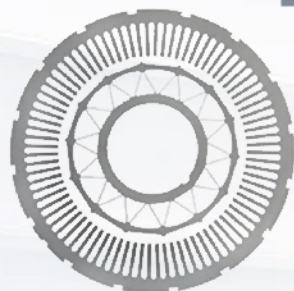
电梯电机



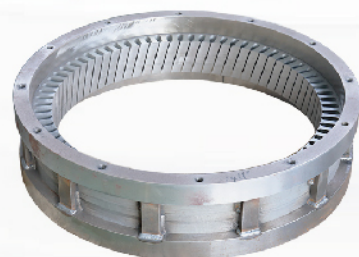
电梯电机铁芯块
Core Blocks



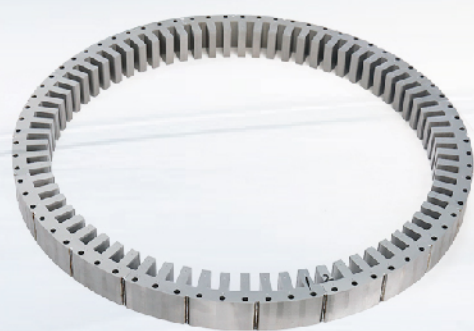
电梯电机定子铁芯
Stator Cores



电梯电机定转子冲片
Stator/ Rotor Lamination

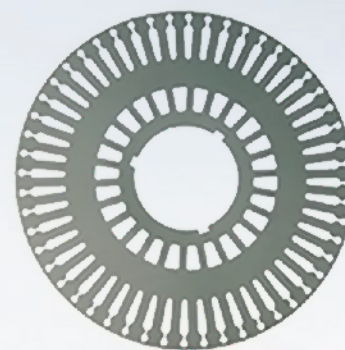


电梯电机定子铁芯
Stator Cores

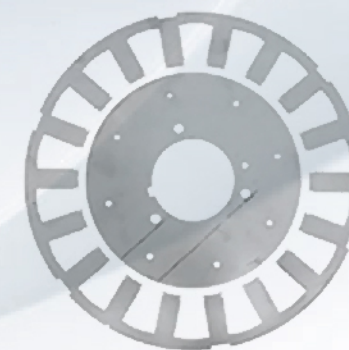


AC MOTOR

交流电机



交流电机定转子冲片
Stator/ Rotor Lamination



交流电机定子铁芯
Stator Cores

