



钦州锦峰海洋重工科技有限公司  
QINZHOU JINFENG OFFSHORE HEAVY INDUSTRY TECHNOLOGY CO., LTD

# QINZHOU JINFENG OFFSHORE

HEAVY INDUSTRY TECHNOLOGY CO., LTD



We SUPPORT  
Your Wind Power



Find us on WeChat 

Address: No. 15, Youyi Avenue, China-Malaysia Qinzhou Industrial Park,  
Qinzhou Port Area, China (Guangxi) Pilot Free Trade Zone

Tel:+86-0777-5819111

Email:qzsales@jinfenggroup.com.cn

# | Content |

|                                  |       |
|----------------------------------|-------|
| Introduction of Qinzhou Jinfeng  | 01    |
| Product Showcase                 | 02-03 |
| Jinfeng Port                     | 04    |
| Offshore Wind Product Shipping   | 05    |
| Geographic Location              | 06    |
| Quality Assurance                | 07    |
| Project Showcase                 | 08-09 |
| Participated Projects            | 10-12 |
| Our Partners                     | 13    |
| Other Factories of Jinfeng Group | 14    |
| Contact Us                       | 15    |



## | CHAIRMAN MESSAGE |

The people of Jinfeng are not afraid of difficulties. Being honest, striving for excellence, working hard and forging ahead, and reaching for the peak are our tenets. With the courage to head for the mountains and seas, seize the day and night, forge ahead vigorously, aim high, and have a global perspective. The people of Jinfeng strive to be a first-class wind power equipment production enterprise in China. With a grateful heart, we repay our employees, society and every partner. We are determined to build a century-old famous enterprise. Since we have chosen a distant place, we will only embrace the storm and march ahead bravely.

Chairman of Jinfeng Group:   
Mr. YAN Sanming

# Introduction of Qinzhou Jinfeng



钦州锦峰海洋重工鸟瞰图

Size of Manufacture Base

**550,000** m<sup>2</sup>

Size of Factory

**140,000** m<sup>2</sup>

Designed Production Capacity

**450,000** Tons/Year

Qin Zhou Jinfeng Offshore Heavy Industry Technology Co., Ltd. is located in Qin Zhou City, a coastal city in southern China. We are a company specializing in the manufacture of wind power towers such as onshore wind towers, offshore wind towers, monopiles, TPs, and jackets. We are the largest manufacturer of wind power towers in southern China with the largest production capacity and the richest variety of products.

The manufacturing base covers an area of 550,000 square meters, of which the production plant area is 140,000 square meters. There are four monopile production lines, two offshore tower production lines, six onshore tower production lines, two jacket production lines, and three steel structure bridge production lines, with a designed production capacity of 450,000 tons per year.

We SUPPORT Your Wind Power

# Product Showcase

## Offshore Wind Tower



|                 |            |
|-----------------|------------|
| Diameter        | 8000 mm    |
| Weight          | 787.8 Tons |
| Height          | 116 Meters |
| Plate Thickness |            |
| Max Thickness   | 62 mm      |

Qingzhou IV Offshore Wind Farm Project, Yangjiang, Guangdong Province, China

## Onshore Wind Tower



|                 |              |
|-----------------|--------------|
| Diameter        | 6330 mm      |
| Weight          | 442.58 Tons  |
| Height          | 136.9 Meters |
| Plate Thickness |              |
| Max Thickness   | 70 mm        |

Liulu Mountain Project, Lingshan County, Qin Zhou, Guangxi Zhuang Autonomous Region, China

# Product Showcase

## Monopile



|                 |              |
|-----------------|--------------|
| Diameter        | 9100 mm      |
| Weight          | 1749.9 Tons  |
| Height          | 102.1 Meters |
| Plate Thickness |              |
| Max Thickness   | 93 mm        |

SHENERGY CZ2 Offshore Wind Power Demonstration Project, Danzhou City, Hainan Province, China

## Jacket



|        |              |
|--------|--------------|
| Weight | 1700 Tons    |
| Height | 67.03 Meters |
| T      | 387.9 Tons   |

Qingzhou IV Offshore Wind Farm Project, Yangjiang, Guangdong Province, China

# Jinfeng Port

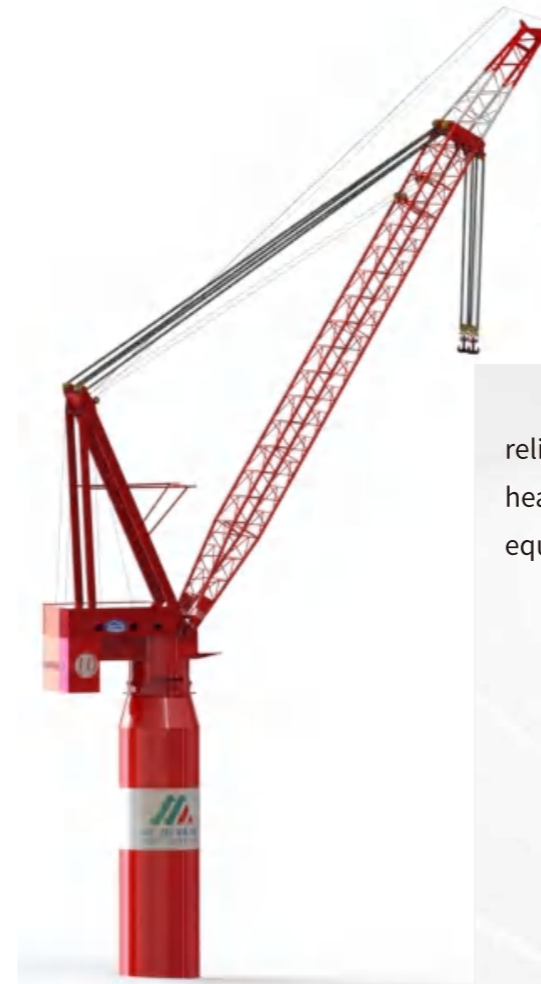
Qinzhou Jinfeng owns two 70,000-ton berths, #12 and #13, along with a 20,000-ton embedded berth, all directly connected to the production site. Once production is completed, products can be transported to the berths for shipment directly. Berth #12 became operational in May 2024 and has successfully dispatched dozens of shipments to date. Berth #13 is expected to be fully operational by the end of 2024.



70,000 Ton Berth



Factory to Berth "Zero" Distance



Berth #12 is equipped with a 2,000-ton fixed rotary crane, capable of reliably and efficiently assembling and loading various large components, heavy machinery, steel structure bridges, and a wide range of wind power equipment.

|                                      |             |
|--------------------------------------|-------------|
| Height:                              | 170 meters. |
| Maximum lifting capacity:            | 2,000 tons. |
| Maximum lifting height - 2,000 tons: | 135 meters. |
| Rotation radius - 2,000 tons:        | 45 meters.  |
| Maximum lifting height - 400 tons:   | 159 meters. |
| Rotation radius - 400 tons:          | 102 meters. |

# | Offshore Wind Product Shipping |



## Monopile Transport and Shipping

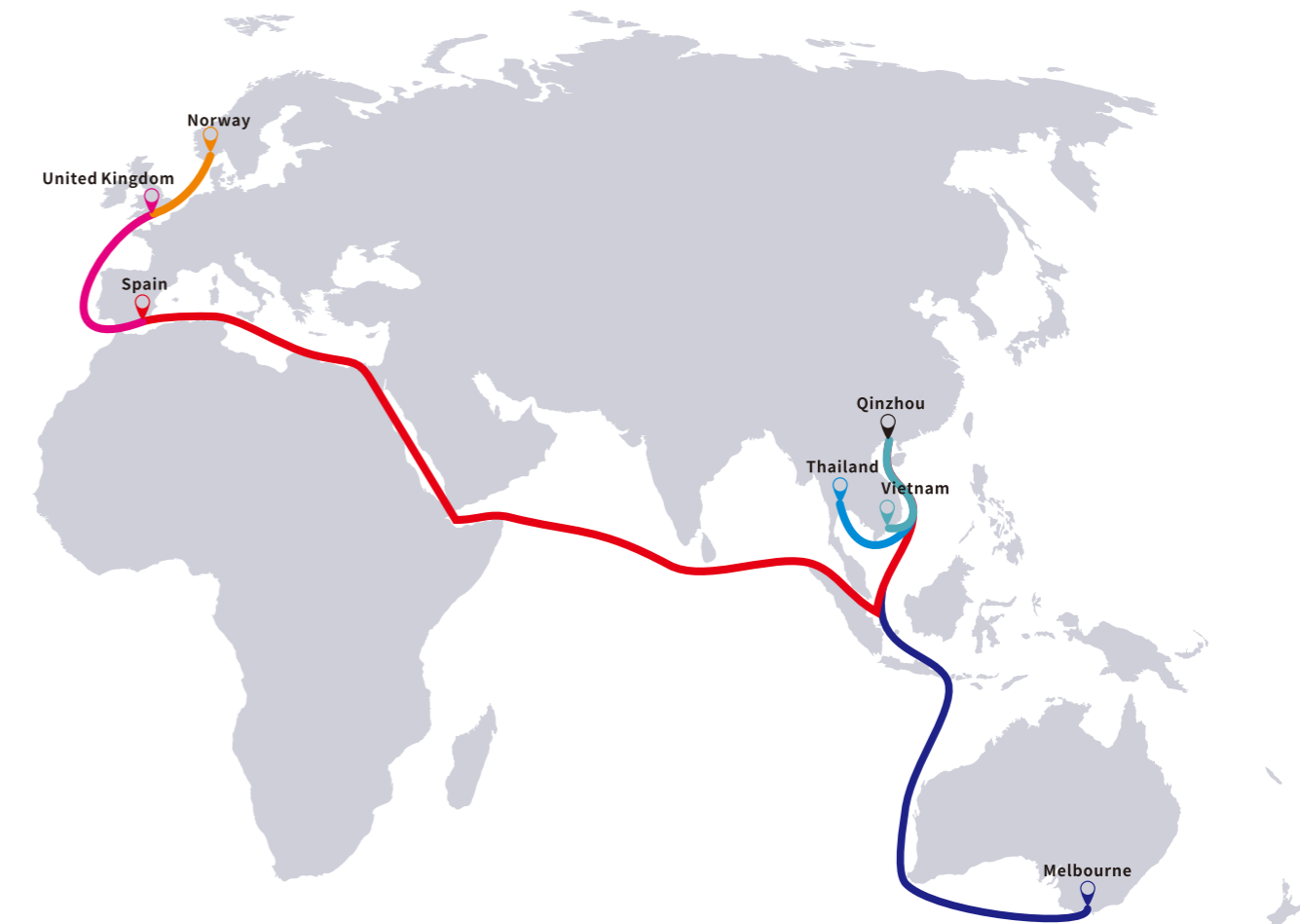


## Jacket Transport and Shipping



## Offshore Wind Tower Transport and Shipping

# | Geographic Location |



## Shipping from Qinzhou Jinfeng To

|   |           |
|---|-----------|
| <span style="color: #008080;">—</span> Vietnam        | 300 Nms   |
| <span style="color: #008080;">—</span> Thailand       | 1350 Nms  |
| <span style="color: #ff0000;">—</span> Spain          | 8200 Nms  |
| <span style="color: #ff00ff;">—</span> United Kingdom | 9750 Nms  |
| <span style="color: #ffa500;">—</span> Norway         | 10500 Nms |
| <span style="color: #0000ff;">—</span> Australia      | 5310 Nms  |

## Our Advantages

Compared to the ports in Tianjin, Jiangsu, and Guangdong provinces, Jinfeng's port is closer to wind farms in Southeast Asia and Europe. We plan to establish a customs supervised area, allowing goods to be easily exported to countries and regions such as Southeast Asia, Europe, and the Americas, saving both time and transportation costs.

# Quality Assurance

## Quality Management System



Design



Manufacture



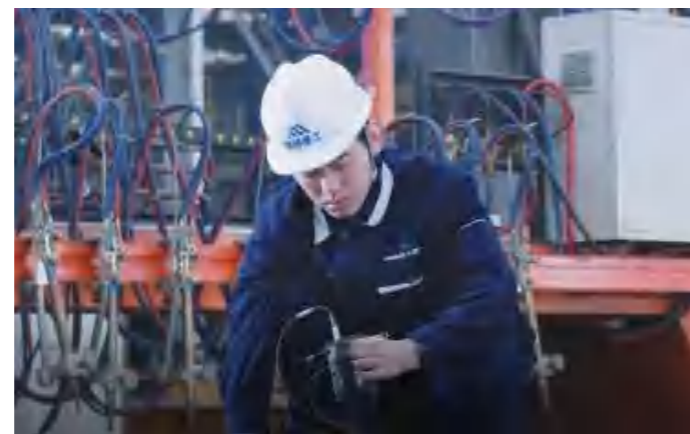
Installation



After-Sales Service

The company adheres to the principle of "Quality First, Customer Foremost" and has implemented a quality management system. It has achieved the GB/T19001-2016/ISO9001:2015 Quality Management System certification and the TÜV Rheinland certification from Germany.

Equipped with precision instruments such as laser measurement devices, ultrasonic impact pressure instruments, and non-destructive testing equipment, the company has comprehensive product testing and inspection capabilities. In addition, it maintains close cooperation with multiple industry testing institutions, providing a strong guarantee for quality control."



# Project Showcase



Offshore Tower and Jacket  
Mingyang Smart Energy Qingzhou IV Offshore Wind Farm  
MYSE11-230 11MW MYSE12-242 12MW



Monopile for 9MW Turbine  
SHENERGY C22 Offshore Wind Power Demonstration Project

# Project Showcase



Offshore Wind Tower

Offshore Wind Energy Demonstration Project, Fangchenggang City, Guangxi  
MYSE8.5-230 8.5MW MYSE10-242 10MW



Offshore Wind Tower  
China Huaneng Group CZ1  
Offshore Wind Farm Project,  
Lingao County, Hainan  
MySE10-242 10MW



Sucking Bucket Offshore Wind Jacket  
China Datang CZ3 Offshore Wind Farm Project, Danzhou City, Hainan  
Jacket and Monopile 10MW

## Product - Offshore Wind Tower

|       | Project Name   | Products                       | Turbine Model            | Total Capacity (MW) | Turbine Capacity (MW) | Quantity | Produced for   |
|-------|--|--------------------------------|--------------------------|---------------------|-----------------------|----------|--|
| 1     | MySE Yangjiang Qingzhou IV Offshore Wind Farm Project  | Offshore Tower and Attachments | MYSE11-230<br>MYSE12-242 | 326                 | 11/12                 | 28       | Mingyang Smart Energy Group Corporation Limited                                    |
| 2     | Transition Piece, Offshore Tower and Accessories for MySE's Hainan M11 Prototype                           | Offshore Tower and Attachments |                          | 11                  | 11                    | 1        | Mingyang Smart Energy Group Corporation Limited                                    |
| 3     | Section I, Offshore Wind Farm for Guangxi Qinzhou Offshore Wind Power Demonstration Project                | Offshore Tower and Attachments | EN252-10.5               | 294                 | 10.5                  | 28       | The Fifth Engineering Co., Ltd. of China Railway Major Bridge Engineering Group    |
| 4     | Huaneng Lingao CZ1 Offshore Wind Power Project in Hainan   | Offshore Tower and Attachments | MySE10-242               | 140                 | 10                    | 14       | Mingyang Smart Energy Group Corporation Limited                                    |
| 5     | Section II, Offshore Wind Farm for Guangxi Qinzhou Offshore Wind Power Demonstration Project               | Offshore Tower and Attachments | MySE10-242-122m          | 80                  | 10                    | 8        | China Energy Engineering Group Guangxi Electric Power Design Institute Co., Ltd.   |
| 6     | Section II, Offshore Wind Farm for Guangxi Qinzhou Offshore Wind Power Demonstration Project               | Offshore Tower and Attachments | MySE10-242-122m          | 20                  | 10                    | 2        | Shandong Ludian International Trade Co., Ltd.                                      |
| 7     | Hainan Shenergy Danzhou CZ2 Project  | Offshore Tower and Attachments | EW9.0-230                | 72                  | 9                     | 8        | Shanghai Electric Wind Power Group Co., Ltd.                                       |
| 8     | Hainan Shenergy Danzhou CZ2 Project  | Offshore Tower and Attachments | EW9.0-230                | 126                 | 9                     | 14       | Shanghai Electric Wind Power Group Co., Ltd.                                       |
| 9     | Envision Guangxi Fangchenggang Offshore Tower Project  | Offshore Tower and Attachments | EN226/8.5                | 51                  | 8.5                   | 6        | Jiangyin Envision Investment Co., Ltd.   |
| 10    | Section 2, Project Site A of Guangxi Fangchenggang Offshore Wind Power Demonstration Project (MySE Models) | Offshore Tower and Attachments |                          | 136                 | 8.5                   | 16       | China Energy Engineering Group Guangdong Electric Power Design Institute Co., Ltd. |
| Total |  |                                |                          | 1256                |                       | 125      |  |

## Product - Monopile and Jacket

|       | Project Name   | Products                  | Total Weight (Ton) | Individual Product Weight (Ton)   | Quantity | Produced for   |
|-------|--|---------------------------|--------------------|---|----------|--|
| 1     | Mingyang Yangjiang Qingzhou IV Offshore Wind Farm Project                                    | Monopile and Jacket       | 17882.50           | 1. Jacket: 1609.5x5<br>Monopile: 1300x5<br>2. Jacket: 1975<br>Monopile: 1360                    | 6        | PowerChina Guizhou Engineering Corporation Limited   |
| 2     | Hainan Shenergy Danzhou CZ2 Project  | Monopile and Attachments  | 10616.10           | 1516.59   | 7        | China Railway Construction Harbour & Channel Engineering Bureau Group (Hainan) Engineering Co., Ltd. |
| 3     | Datang Danzhou Offshore Wind Power Project, Hainan   | Suction Bucket Jacket     | 8125.00            | Jacket: 860.5+Suction Bucket: 1170.75   | 4        | Jiangsu Branch of China Communications Third Navigational Engineering Bureau Co., Ltd.               |
| 4     | Site 1 of the 1.2M KW Datang Danzhou Offshore Wind Power Project, Hainan                     | Monopile                  | 6033.49            | 30# Monopile: 1528.1<br>35# Monopile: 1303.39<br>39# Monopile: 1571.72<br>40# Monopile: 1630.28 | 4        | China Communications Third Navigation Bureau (Nantong) Ocean Engineering Co., Ltd.                   |
| 5     | Section 1, Project Site A of Guangxi Fangchenggang Offshore Wind Power Demonstration Project | Steel Pile and Jacket     | 5952.00            | Steel Piles: 232+Jacket: 760  | 6        | China Communications Third Navigational Engineering Bureau Co., Ltd.                                 |
| 6     | Yuedian Yangjiang Shangyangwan Offshore Wind Farm Project, Guangdong                         | Jacket                    | 1463.7             | Jacket: 613.56<br>Transitional Piece: 118.29  | 2        | China Energy Engineering Group Equipment Co., Ltd.   |
| 7     | Jacket Modification for Fangchenggang Project  | Jacket                    | 369.6              | 14# Tripod Jacket: 105.6<br>01# Tripod Jacket: 105.6<br>Sub-station Jacket: 158.4               | 3        | The Sixth Company Of China Communications Third Navigation Engineering Bureau Co., Ltd.              |
| 8     | Section II of Site A of Guangxi Fangchenggang Offshore Wind Power Demonstration Project      | Steel Protective Cylinder | 255.63006          | 4.06  | 63       | The Fifth Engineering Co., Ltd. of China Railway Major Bridge Engineering Group                      |
| Total |  |                           | 50698.02           |   | 95       |  |

### Product - Onshore Wind Tower

|              | Project Name  | Products                                     | Turbine Model  | Total Capacity (MW) | Turbine Capacity (MW) | Quantity   | Produced for   |
|--------------|---|--|--|---------------------|-----------------------|------------|--|
| 1            | Envision CGN Guangxi Kangxiling Phase II Wind Power Project   | Onshore Tower and Attachments                | EN200/7.15   | 200.2               | 7.15                  | 28         | Jiangyin Envision Investment Co., Ltd.                                   |
| 2            | First Phase (Liulu Mountain) of SDIC Guangxi Qinzhou Lingshan   | Onshore Tower and Attachments                | MySE6.25-193-110m<br>MySE6.7-193-110m  | 400.2               | 6.25/6.7              | 60         | Mingyang Smart Energy Group Corporation Limited                          |
| 3            | The Huajieshan Wind Farm Project in Longsheng County, Guangxi   | Onshore Tower and Attachments                | 6.7-200-115m<br>6.25-182-105m<br>6.25-182-115m                                   | 72.35               | 5.25/6.7              | 11         | Longsheng Jieyuan New Energy Co., Ltd.                                   |
| 4            | China Resources Jiangxi Ganzhou Nankang Qingtian Phase II   | Onshore Tower and Attachments (Hybrid Tower) | 5.56-193 6.25-200  | 42.37               | 5.56/6.25             | 7          | Mingyang Smart Energy Group Corporation Limited                          |
| 5            | Guangxi Bulao Mountain Wind Power Project   | Onshore Tower and Attachments                |  | 50                  | 6.25                  | 8          | PowerChina Zhongnan Engineering Corporation Limited                      |
| 6            | Guangxi Nabing Wind Power Project   | Onshore Tower and Attachments                |  | 50                  | 6.25                  | 8          | PowerChina Zhongnan Engineering Corporation Limited                      |
| 7            | CGN Guangxi Qinnan Kangxiling Wind Power Project  | Onshore Tower and Attachments                |  | 60                  | 6                     | 10         | CGN New Energy Qinzhou Co., Ltd.   |
| 8            | First Bureau of China Aneng, Second Batch of Wind Power Projects in Chengxiang, Laibin, Guangxi                           | Onshore Tower and Attachments                | 5.56-200   | 94.52               | 5.56                  | 17         | Mingyang Smart Energy Group Corporation Limited                          |
| 9            | China Resources Guangxi Wuzhou Tengxian Tongxin 100MW Wind Power Project  | Onshore Tower and Attachments                | MySE5.56-193-110m<br>MySE5.56-193-115m<br>MySE5.56-200-115m<br>MySE5.56-200-120m | 100.08              | 5.56                  | 18         | Mingyang Smart Energy Group Corporation Limited                          |
| 10           | The Yanghuoping Wind Farm Project in Ziyuan County, Guangxi   | Onshore Tower and Attachments                | MySE5.56/5.0 -200/115  | 33.36               | 5.56/5.0              | 6          | PowerChina Zhongnan Engineering Corporation Limited                      |
| 11           | The Wind Power Project in Santan Town, Bobai County, Yulin, Guangxi   | Onshore Tower and Attachments                | V12-2403   | 88.4                | 5.0/5.6               | 16         | Xinjiang Goldwind Science & Technology Co., Ltd.                         |
| 12           | China Datang Group Binyang Mawang Wind Farm Phase III   | Onshore Tower and Attachments                |  | 99.65               | 3.85/5.0              | 22         | Deyang Branch of Sinohydro Jiajiang Hydraulic Machinery Co., Ltd., China |
| 13           | Chn Energy Tengxian Dali Wind Power Phase II Project  | Onshore Tower and Attachments                | GZ-50.15-01D   | 50                  | 5                     | 10         | Chnenergy Tengxian Energy Development Co., Ltd.                          |
| 14           | The 100 (MW) Wind Power Project of Guangxi SDIC in Nasi Town, Qinnan District, Qinzhou, Guangxi                           | Onshore Tower and Attachments                |  | 100                 | 5                     | 20         | Beijing Tianshan High-tech Wind Power Technology Co., Ltd.               |
| 15           | Phrase II Wind Farm in Luchuan, Guangxi   | Onshore Tower                                | EN182-4.65-120m  | 51.15               | 4.65                  | 11         | Shanghai Ruijing Energy Technology Co., Ltd.                             |
| 16           | Lingshan County Wind Power Project, Guangxi   | Onshore Tower and Attachments                | EN-182/4.25-120m<br>EN-192/4.25-120m   | 148.75              | 4.25                  | 35         | Shanghai Ruijing Energy Technology Co., Ltd.                             |
| 17           | Chn Energy Napo Yangjiashan 100MW Wind Power Project  | Onshore Tower and Attachments                | MySE4.0-182-105m   | 48                  | 4.0                   | 12         | CRRC Lanzhou Locomotive Co., Ltd.  |
| 18           | Phase I of Guangxi Guilin Quanzhou Wind Farm Project  | Onshore Tower and Attachments                | EN3.3-156-110m   | 39.6                | 3.3                   | 12         | Jiangyin Envision Investment Co., Ltd.                                   |
| 19           | Phase II of Guangxi Guilin Quanzhou Wind Farm Project   | Onshore Tower and Attachments                | EN3.3-156-110m   | 19.8                | 3.3                   | 6          | Jiangyin Envision Investment Co., Ltd.                                   |
| 20           | Tower for 100,000-kW project in Chitian and the 80,000-kW project in Chian, Fengxin County, Yichun City, Jiangxi Province | Onshore Tower and Attachments                |  |                     |                       | 32         | Mingyang Smart Energy Group Corporation Limited                          |
| <b>Total</b> |   |  |  | <b>1748.43</b>      |                       | <b>349</b> |  |

### Product - Segmented Onshore Tower

|              | Project Name   | Products                | Turbine Model      | Total Capacity (MW) | Turbine Capacity (MW) | Quantity  | Produced for                                     |
|--------------|--|-------------------------|--------------------|---------------------|-----------------------|-----------|--|
| 1            | China Energy Conservation Group Qinzhou Wind Power Project Phase III, Qinzhou, Guangxi | Segmented Onshore Tower | v12-2408/2409/2410 | 67                  | 6.7                   | 10        | Xinjiang Goldwind Science & Technology Co., Ltd. |
| 2            | China Energy Conservation Group Xincheng Sudeng Phase II Project, Guangxi              | Segmented Onshore Tower | V12-2403/2412      | 60                  | 5.0                   | 12        | Xinjiang Goldwind Science & Technology Co., Ltd. |
| 3            | Envision Dongchang Town Phase II Project, Qinzhou, Guangxi                             | Segmented Onshore Tower | EN-192/4.65-135    | 27.9                | 4.65                  | 6         | Shanghai Ruijing Energy Technology Co., Ltd.     |
| 4            | Envision Hepu Xiwu Project, Guangxi  | Segmented Onshore Tower | EN-192/4.65-135    | 18.6                | 4.65                  | 4         | Shanghai Ruijing Energy Technology Co., Ltd.     |
| <b>Total</b> |  |                         |                    | <b>173.5</b>        |                       | <b>32</b> |  |





## | Our Partners |



## | Other Factories of Jinfeng Group |



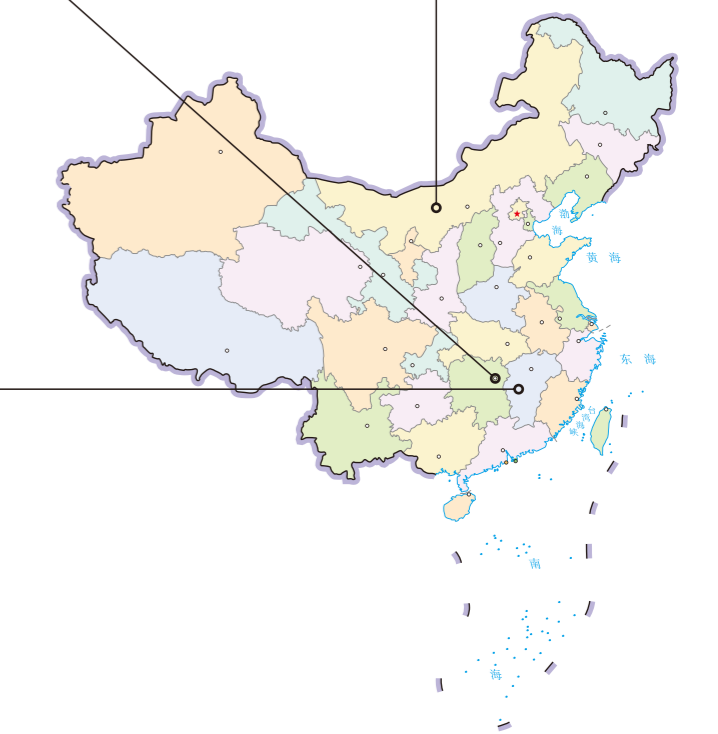
|                              |                              |
|------------------------------|------------------------------|
| Size of Manufacture Base     | <b>173,000 m<sup>2</sup></b> |
| Size of Factory              | <b>60,000 m<sup>2</sup></b>  |
| Designed Production Capacity | <b>100,000 Tons/Year</b>     |



|                              |                              |
|------------------------------|------------------------------|
| Size of Manufacture Base     | <b>130,000 m<sup>2</sup></b> |
| Size of Factory              | <b>16,000 m<sup>2</sup></b>  |
| Designed Production Capacity | <b>120,000 Tons/Year</b>     |



|                              |                              |
|------------------------------|------------------------------|
| Size of Manufacture Base     | <b>106,000 m<sup>2</sup></b> |
| Size of Factory              | <b>60,000 m<sup>2</sup></b>  |
| Designed Production Capacity | <b>100,000 Tons/Year</b>     |



## | Contact Us |

### Li Shang

Deputy General Manager - Sales  
shangli@jinfenggroup.com.cn  
+8617373177779

### Yahui Yan

Deputy General Manager - Procurement  
yanyahui@jinfenggroup.com.cn  
+8615874056888

### Kangdi Wu

Assistant to Chairman  
wkd@jinfenggroup.com.cn  
+8618684769193



## Set sail and stride towards the sea

