

# 虎啸®

## Professional Grade Impact Wrench Electric Torque Control Wrench with Torque Meter



Shanghai Huxiao Power Tools Co., Ltd (referred to as Huxiao) locates at Xinzhuang Industrial Zone, Shanghai China. Through decades of technology innovation and development, Huxiao has been a premium professional brand in the power tools industry. Huxiao provides a full pipeline including impact wrench, electric torque control wrench (pre-set torque), electric torque wrench with torque meter(with high-precision torque sensor), shear wrench (applicable to high strength bolt on steel construction), professional electric wrench for railway, high torque impact wrench applicable to automobile tire installation, etc. Huxiao has been a well acknowledged brand for high quality and reliable service.

The product is widely applied in fields of Beijing-Guangzhou railway, Beijing-Shanghai railway, Shanghai Metro, the Hong Kong-Zhuhai-Macao Bridge, China Pavilion at Shanghai World Expo, National Exhibition and Convention Center (Shanghai), Shanghai Tower, automobile industry, machinery engineering, oil and gas pipeline, power transmission tower, power grid towers, construction tower cranes, metallurgy, railway bridges, railway engineering sections and vehicle sections, high-rise and large steel structures.

Huxiao has been adhering to the principle of "good products for good customers", and actively serving the national key projects and the "Belt and Road" construction. The main users are listed but not limited to: China Construction, China Railway Construction, China Railway, China Metallurgy, State Grid, China Petrochemical, China Communications Construction, China Aviation, China Shipbuilding Industry.

## Shanghai Huxiao Power Tools Co., Ltd



# Product Catalogue

Impact Wrench .....	3/4/5
Electric Torque Control Wrench (T series) .....	6/7
Electric Torque Control Wrench with Torque Meter (TD series) .....	8/9
Electric Torque Control Wrench (TC series) .....	10
Electric Torque Control Wrench with Torque Meter (TCD series) .....	11
Electric Torque Control Wrench (TR series) .....	12
Electric Torque Control Wrench for Railway .....	13
Electric Torque Control Wrench for Automobile Tire Installation .....	14
Electric Tapping machine .....	14
Torque Meter, Extended Socket, Shear Wrench Extended Socket .....	15
Special Reaction Arm .....	16/17
Electric Shear Wrench .....	18
Initial Tightening Shear Wrench, Initial Tightening Torque .....	19

## Reference Values for Screw/Bolt Tightening

Class		Class 6.8	Class 8.8	Class 10.9	Class 12.9	Flat width of Class 10.9 hex bolt used on steel structure	
Material		35# Steel	Alloy Steel	Alloy Steel	Alloy Steel		
Bolt Spec /M	Flat width /S	Torque Value	Torque Value	Torque Value	Torque Value		
		N•m	N•m	N•m	N•m		
M6	10	7	9	13	14	(Socket Size)	<p>① This chart can be applied for choosing the applicable tool. Please refer to related standard for precise torque value.</p> <p>② Steel structure, railway, heavy construction installation shall refer to the instruction on working drawing.</p> <p>③ The bolt installation torque is related with friction coefficient,with spring washer the torque value may decrease.</p>
M8	13	17	23	33	40		
M10	16	33	45	65	70		
M12	18	57	80	115	125		
M14	22	78	116	132	180		
M16	24	110	165	198	282	27	
M18	27	165	227	272	384		
M20	30	237	321	455	541	34	
M22	32	266	431	612	729	36	
M24	36	376	549	785	940	41	
M27	41	510	823	1177	1411	46	
M30	46	705	980	1570	1881	50	
M33	50	902	1176	1648	1960		
M36	55	1176	1400	1962	2352		
M39	60	1411	1725	2355	2900		
M42	65	1881	2195	3060	3685		
M45	70	2195	2508	3532	4312		
M48	75	2744	3136	4473	5331		
M52	80	3174	4224	5928	7080		
M56	85	3936	5226	7200	8880		
M60	90	4908	6510	9100	10980		
M64	95	5934	7860	11100	13380		

# Impact Wrench



□ A-12C  
Impact  
Wrench



□ E14  
Impact  
Wrench



E16  
Impact  
Wrench



P1B-DV-20C  
Impact  
Wrench



S20  
Impact  
Wrench



P1B-DV-22C  
Impact  
Wrench

Category	Model	Applicable Bolt		Torque Range (N·m)	Square Drive Size (mm)	Weight (Kg)	Input Power (W)
		Standard	High				
Impact Wrench	□ A-12C	M8~M12	M10~M12	40~100	12.7 × 12.7	2.1	330
Impact Wrench	□ E14	M10~M14	M12~M14	40~110	12.7 × 12.7	2.2	330
Impact Wrench	E16	M10~M16	M12~M14	80~170	12.7 × 12.7	2.5	380
Impact Wrench	P1B-DV-20C	M12~M20	M12~M16	100~200	12.7 × 12.7	2.9	300
Impact Wrench	S20	M12 M20	M12~M16	100~250	12.7 × 12.7	3.1	380
Impact Wrench	P1B-DV-22C	M12~M22	M12~M18	100~300	12.7 × 12.7	3.4	600





# Impact Wrench



E24A (Square Drive Size 19 x 19)



□ P1B-DV-24C

Applies to the initial tightening of high strength bolt on steel structure



S1000

Applies to the tightening of bolt M22-M24 on steel structure



□ P1B-DV-30C

Impact Wrench (The most powerful of the series)



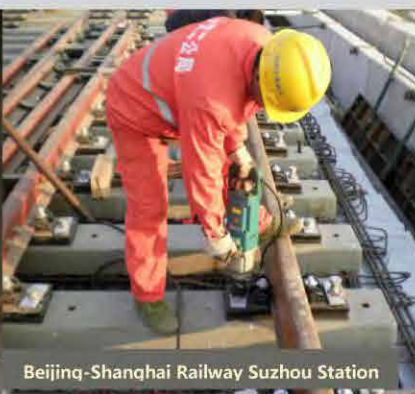
□ P1B-DV-32C Impact Wrench



□ P1B-DV-36C Impact Wrench



Shanghai Metro



Beijing-Shanghai Railway Suzhou Station



Pingtan Railway Bridge

Category	Model	Applicable Bolt		Torque Range (N·m)	Square Drive Size(mm)	Weight (Kg)	Input Power (W)
		Standard	High Strength				
Impact Wrench	E24A	M16 ~ M24	M16 ~ M20	150 ~ 450	19 × 19	4.1	600
Impact Wrench	PIB-DV-24C	M16 ~ M24	M16 ~ M20	200 ~ 450	19 × 19	4.8	600
Impact Wrench	S1000	M20 ~ M30	M22 ~ M24	300 ~ 1000	25.4 × 25.4	8.5	1050
Impact Wrench	P1B-DV-30C	M22 ~ M30	M22 ~ M24	300 ~ 1000	25.4 × 25.4	9	1050
Impact Wrench	P1B-DV-32C	M24 ~ M33	M20 ~ M24	300 ~ 1050	25.4 × 25.4	9.5	1050
Impact Wrench	P1B-DV-36C	M24 ~ M36	M20 ~ M24	500 ~ 1200	25.4 × 25.4	10	1050

# Impact Wrench



**S30 Impact Wrench for Railway**  
2 modes to control torque



**S32L Impact Wrench for Railway**  
2 modes to control torque



**(High torque)**  
**S2000 Impact Wrench**  
Applicable to construction machinery and tower cranes



**S2000L Impact Wrench**



## S30, S32L product feature:

Switch high or slow-speed forward rotation to control torque. The slow mode prevents damage of bolt connection.

Switch to high speed reverse rotation enables to loose rusty bolt connection with maximum torque.

Category	Model	Applicable Bolt		Torque Range (N·m)	Square Drive Size(mm)	Weight (Kg)	Input Power (W)
		Standard	High Strength				
Impact Wrench	S30 、 S32L	M24 ~ M33	M20 ~ M24	250 ~ 950	25.4 × 25.4	9.5	1050
Impact Wrench	S2000L、 S2000	M22 ~ M42	M27 ~ M30	800 ~ 2000	25.4 × 25.4	13	1600



# Electric Torque Control Wrench (T Series, Z-shape reaction arm)

- **Feature and application:** The wrench stops when the preset torque is reached. The repeatable control deviation is within  $\pm 5\%$ . Applicable to steel structures, railway bridges, construction machinery, tower cranes installation.



T130/T180



T300



T500



T700A



T1000A



T1700/T1700T

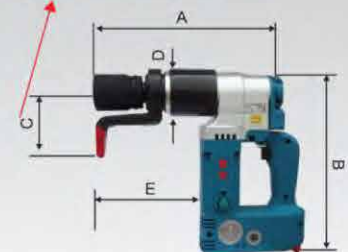
The highest building in China: Shanghai Center



Shanghai Railway Yangtze River Bridge



Length of Reaction Arm



External dimensions of the machine

Model	Torque Control Range N·m	Applicable to 10.9 high strength bolts	Unloaded Rotation r/min	Drive Size	External dimensions of the machine (mm)					Weight	Input Power (W)
					A	B	C	D	E		
T130	50~130	M12 . M10	25	12.7	290	250	90			2.9	260
T180	90~180	M12 . M14	20	12.7	290	250	90			2.9	260
T300	150~400	M16 . M18	18	19	250	290	110	60	130	4.3	350
T500	250~600	M20 . M18	18	19	260	290	110	68	140	4.9	450
T700A	350~800	M22 .M20 .M24	15	25.4	285	295	110	75	170	6.8	710
T1000A	600~1200	M24.M22.M27	9	25.4	300	310	135	85	180	7.9	
T1700	700~1700	M30.M27.M24	6	25.4	340	315	135	70	200	8.3	
T1700T	700~1700	M30 (Standard Tower Crane Section)	6	25.4	340	315	110	70	200	8.3	

## Electric Torque Control Wrench (T Series, Z-shape reaction arm)

- Feature and application:** The wrench stops when the preset torque is reached. The repeatable control deviation is within  $\pm 5\%$ . Applicable to steel structures, railway bridges, petrochemical industry, construction machinery, tower cranes and base bolt installation.



T2000NA



T3000A/T3000T

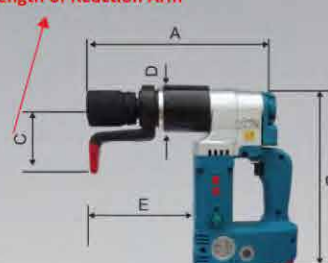


T5000A



T10000A/T12000

Length of Reaction Arm



External dimensions of the machine



Model	Torque Control Range N·m	Applicable to 10.9 high strength bolts	Unloaded Rotation r/min	Drive Size	External dimensions of the machine (mm)					Weight	Input Power (W)
					A	B	C	D	E		
T2000NA	1000~2000	M30 .M27	5	25.4	320	315	135	100	200	8.3	710
T3000A	1000~3000	M36.M39.M33.M30	4	38.1	330	310	150	100	260	9.7	
T3000T	1000~3000	M36 (Standard Tower Crane Section)	4	38.1	330	310	150	100	260	9.7	
T5000A	2000~5000	M42.M39.M36.M45	2.5	38.1	340	325	165	115	275	13	
T10000A	4000~10000	M56.M48.M52.M60	1	44.4	440	350	180	140	310	17	
T12000	5000~12000	M64.M60.M56	1	58 (Hexagonal)	440	350	180	140	310	17	



## Electric Torque Control Wrench with Torque Meter (TD Series, with Torque Measurement and digital display)

- **Feature and application:** The wrench stops when the preset torque is reached. The repeatable control deviation is within  $\pm 5\%$ . It is the replacement of hydraulic wrench and manual digital wrench, which significantly improves the efficiency and shorten construction. Applicable to construction where high precision is required such as railway locomotives, bogie, etc.



TD130/TD180



TD400



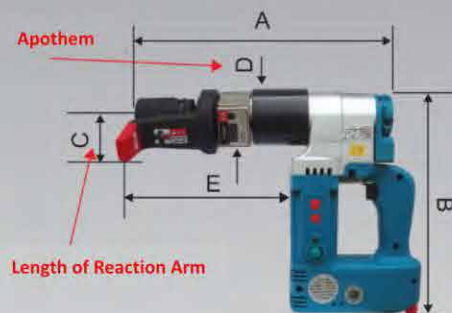
TD600



TD800/TD1000



TD1200



External dimensions of the machine



TD Series with torque sensor,  
digital display within  $\pm 1\%$   
deviation



Model	Torque Control Range N·m	Applicable to 10.9 high strength bolts	Unloaded Rotation r/min	Drive Size	External dimensions of the machine (mm)					Weight	Input Power (W)
					A	B	C	D	E		
TD130	50~130	M12.M10	25	12.7	290	250	90			2.9	260
TD180	90~180	M12.M14	20	12.7	290	250	90			2.9	260
TD400	150~400	M16 . M18	18	19	280	290	110	62	130	4.3	350
TD600	250~600	M20 . M18	18	19	290	290	110	68	130	4.9	450
TD800	350~800	M22 .M20 .M24	15	25.4	315	295	110	75	170	6.8	710
TD1000	400~1000	M22 .M20 .M24	15	25.4	315	295	135	75	170	6.8	
TD1200	600~1200	M24.M22.M27	9	25.4	330	310	135	85	180	7.9	



## Electric Torque Control Wrench with Torque Meter (TD Series, with Torque Measurement and digital display)

- **Feature and application:** The wrench stops when the preset torque is reached. The repeatable control deviation is within  $\pm 5\%$ . It is the replacement of hydraulic wrench and manual digital wrench, which significantly improves the efficiency and shorten construction. Applicable to construction where high precision is required.



TD2000



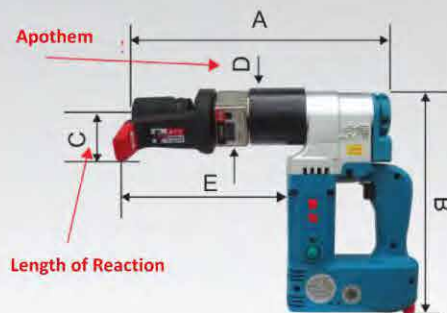
TD3000



TD5000



TD10000A



External dimensions of the machine

Model	Torque Control Range N·m	Applicable to 10.9 high strength bolts	Unloaded Rotation r/min	Drive Size	External dimensions of the machine (mm)					Weight	Input Power (W)
					A	B	C	D	E		
TD2000	1000~2000	M30.M27	5	25.4	350	315	135	100	200	8.3	710
TD3000	1000~3000	M36.M39.M33.M30	4	38.1	360	310	150	100	260	9.7	
TD5000	2000~5000	M42.M48.M45.M39	2.5	38.1	370	325	165	117	275	13	
TD10000A	4000~10000	M48.M52.M56.M60	1	44.4	470	350	180	140	310	17	

## Electric Torque Control Wrench TC Series (Liner design with double handler, Labor saving)

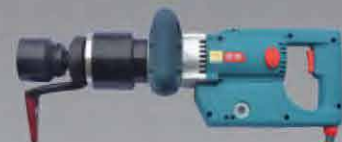
- **Feature and application:** The wrench stops when the preset torque is reached. The repeatable control deviation is within  $\pm 5\%$ . The products are widely applied to railway engineering, mechanics, public works, tower crane foot bolts, hydraulic breaker, large mechanical and electrical equipment, oil and gas pipeline installation.



TC800



TC1200



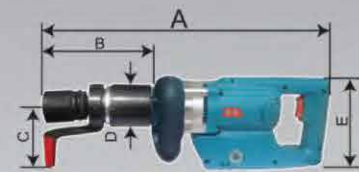
TC2000/TC3000



TC5000



TC10000



TC Series



Wind turbine equipment installation



Railway bridge

Model	Torque Control Range N·m	Applicable to 10.9 high strength bolts	Unloaded Rotation r/min	Drive Size	External dimensions of the machine (mm)					Weight	Input Power (W)
					A	B	C	D	E		
TC800	350~800	M22.M20.M24	16	25.4	500	180	110	75	160	6.5	800
TC1200	600~1200	M24.M27.M22	10	25.4	515	200	135	85	160	8.4	
TC2000	1000~2100	M30.M27.M33	6	25.4	530	205	135	100	160	8.7	
TC3000	1000~3000	M36.M39.M33.M30	5	38.1	560	235	150	100	160	10.2	
TC5000	2000~5000	M39.M42.M45.M48	4	38.1	600	270	165	117	160	13.5	
TC10000	4000~10000	M48.M52.M56.M60	2	44.4	640	310	190	140	160	17	



## Electric Torque Control Wrench with Torque Meter (TCD Series)

- **Feature and application:** The wrench stops when the preset torque is reached. The repeatable control deviation is within  $\pm 5\%$ . The products are widely applied to railway engineering, mechanics, public works, tower crane foot bolts, hydraulic breaker, large mechanical and electrical equipment, oil and gas pipeline installation.



TCD800



TCD1200



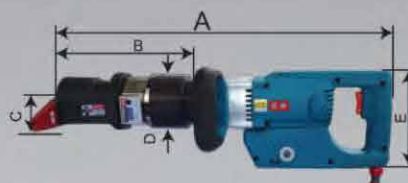
TCD2000/TCD3000



TCD5000



TCD10000



**TCD Series**  
(with torque sensor, display deviation  $\pm 2\%$ )

Wind turbine equipment installation



Railway bridge



Model	Torque Control Range N·m	Applicable to 10.9 high strength bolts	Unloaded Rotation r/min	Drive Size	External dimensions of the machine (mm)					Weight	Input Power (W)
					A	B	C	D	E		
TCD800	350~800	M22.M20.M24	16	25.4	500	180	110	75	160	6.5	800
TCD1200	600~1200	M24.M27.M22	10	25.4	515	200	135	85	160	8.4	
TCD2000	1000~2100	M30.M27.M33	6	25.4	530	205	135	100	160	8.7	
TCD3000	1000~3000	M36.M39.M33.M30	5	38.1	560	235	150	100	160	10.2	
TCD5000	2000~5000	M39.M42.M45.M48	4	38.1	600	270	165	117	160	13.5	
TCD10000	4000~10000	M48.M52.M56.M60	2	44.4	640	310	180	140	160	17	

## Electric Torque Control Wrench (TR Series)

(Apply to the steel structure installation with 10.9 hex blot M16, M20, M22, M24, M27, M30)

- **Feature and application:** Integrated socket and reaction arm, the machine is much lighter than T series, the short reaction arm allows a compact design.
- **Torque Control:** The machine stops when preset torque is reached. The green light shows operating status. Forward and reverse rotation modes can be selected. The torque control deviation is within  $\pm 5\%$ . The machine works smoothly with limited vibration and noise.
- **Application:** Applied on where torque accuracy is strictly controlled. Professional in tightening high strength bolt. Widely used in the construction of steel structures, railway bridges, aerospace, petrochemical and metallurgy industry, power construction, ships, construction machinery and large electromechanical equipment.

TR800/TR500



TR1200



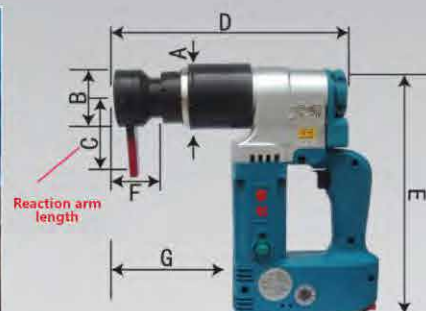
TR2000



The high rise in China: Shanghai Center



Shanghai Railway Yangtze River Bridge

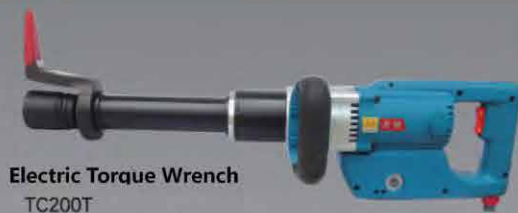


- **Specification:** Voltage 220V $\sim \pm 10\%$ , Maximum current 6.5A, the torque control deviation is within  $\pm 5\%$

Model	Torque Control Range N·m	Unloaded Rotation r/min	Weight (Kg)	Socket Spec (mm)	10.9 High Strength Bolt	External dimensions of the machine (mm)							Input Power (W)
						A	B	C	D	E	F	G	
TR500	250~500	21	4.9	34. 32. 30. 27	M20. M16	68	65	90	250	296	51	126	710
TR800	350~800	16	5.7	36. 34. 32. 41	M22. M20. M24	75	65	90	260	296	51	126	
TR1200	600~1200	10	7.1	41. 36. 46	M24. M22. M27	85	77	90	275	310	60	142	
TR2000	1000~2100	5	7.8	50. 46. 55	M30. M27	98	87	125	288	310	49	158	



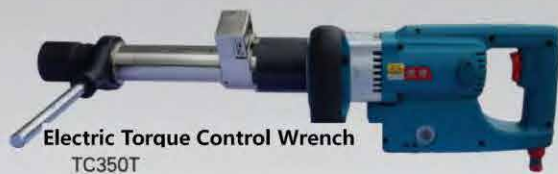
## Electric Torque Control Wrench for railway and subway (Pre-set torque)



**Electric Torque Wrench**  
TC200T  
Fastener Bolts (with clips)  
Torque control range: 60~170N·m



**Electric Display Torque Wrench**  
TCD200T  
Fastener Bolts (with clips)  
Torque control range: 60~170N·m



**Electric Torque Control Wrench**  
TC350T  
(Plastic nut embedded)  
Torque control range: 300~500N·m



**Electric Display Torque Wrench**  
TCD350T  
(Plastic nut embedded)  
Torque control range: 300~500N·m

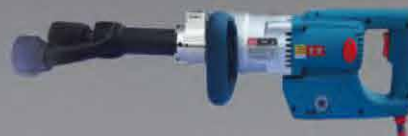


Model	Torque Control Range N·m	Applicable	Unloaded Rotation r/min	Driver Size	Weight (Kg)	Input Power (W)
TC200T / TCD200T	60~170	With clips	70	25.4	6.5	800
TC350T / TCD350T	300~500	Plastic Nut Embedded	25	25.4	6.5	800

## Electric Torque Control Wrench for Automobile Tire Installation (The machine stops when the pre-set torque is reached, repeatable precision is within $\pm 5\%$ )



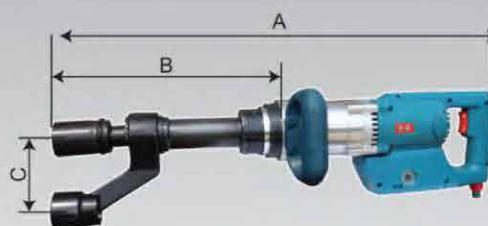
**TC800L**  
Electric Torque Wrench



**TCD1000L**  
Electric Display Torque Wrench



**TC1200L**  
Electric Torque Wrench



Widely applied in the installation torque control of the bus tire and truck tire.

Model	Torque Control Range N·m	10.9 High Strength Bolt	Socket Spec (mm)	Unloaded Rotation r/min	Driver Size	External dimensions of the machine (mm)						Weight (Kg)	Input Power (W)
						A	B	C ( 4 to choose )					
TC800L	350~800	M22	32.33	16	25.4	700	320	100	103.5	110	113.5	9.8	800
TCD1000L	400~1000	M22	32.33	16	25.4	700	320					9.8	800
TC1200L	600~1200	M22	32.33	10	25.4	700	320					11	800

## Electric Tapping Machine

Universal Coupling

**GM 12**



Category	Model	Input Power	Loaded Rotation	Tapping Range		Weight	Voltage
Electric Tapping Machine	GM12	500W	Forward Rotation 0~350min <sup>-1</sup>	Steel	M4~M10	2.65kg	220V
			Reverse Rotation 0~600min <sup>-1</sup>	Al-Cu Alloy	M4~M12		
				Cast Iron	M4~M12		



## Electric Torque Control Wrench Calibration Torque Meter

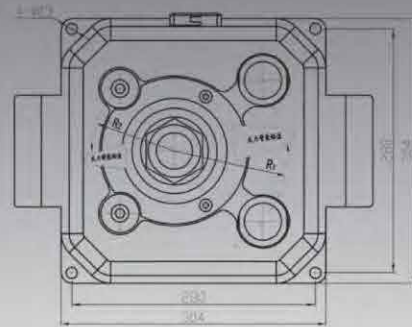
With bolt simulator, calibrates electric torque wrench.



**A5000 torque calibration**  
range:  
1000-5000N•m



**A2000 torque calibration**  
range:  
400-2000N•m



Model	Reaction arm length	Baton	Maximum torque	Accuracy
A5000	R=130	D: 42	< 5000N/M	± 2%
A2000	R=95	D: 36	< 2000N/M	± 2%

## Extended Sockets

Applied to tower crane double nuts, etc.



Model	Drive Size	Socket Spec	Length
TT25.4-46-92	25.4	46	92
TT25.4-46-165	25.4	46	165
TT25.4-50-165	25.4	50	165
TT25.4-55-165	25.4	55	165
TT25.4-60-165	25.4	60	165
TT25.4-65-165	25.4	65	165
TT25.4-70-180	25.4	70	180
TT25.4-75-180	25.4	75	180
TT38.1-55-117	38.1	55	117

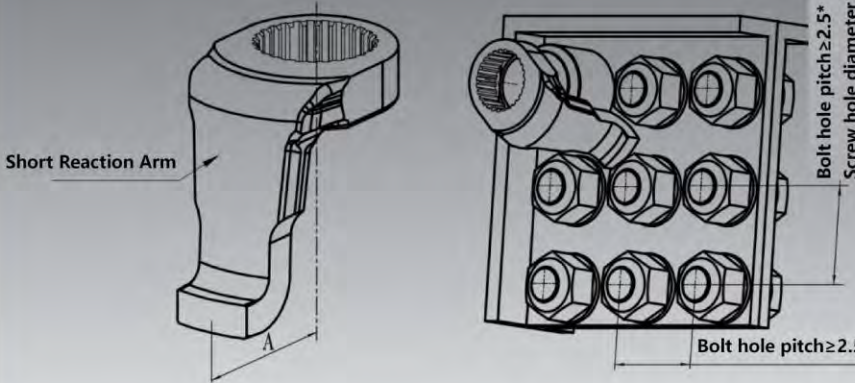
## Shear Wrench Extended Sleeve



Model	Applicable Model	Extended Length
JT-100-H22	H22	100
JT-100-H24	H24	100


## Special Reaction Arm

### 1. Shorten Reaction Arm (Hole pitch $\geq 2.5 \times$ hole diameter)



Short Reaction Arm

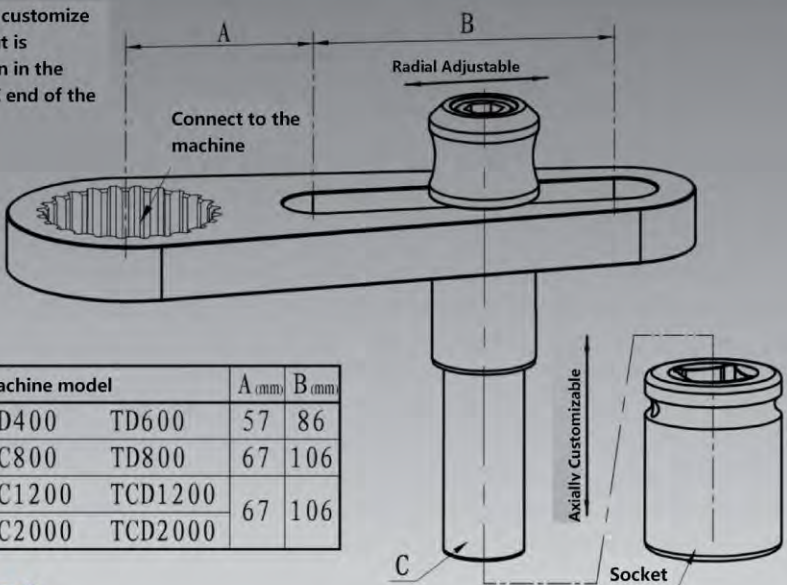
**Notes:** Short reaction arm is applicable to where bolt hole pitch  $\geq 2.5 \times$  Screw hole diameter





Model	Applicable to machine model				Bolt Size		A (mm)
FD500	TD400	TD600	T300	T500	M16	M20	46
FD700	TC800	TCD800T	T700A	TD800	M20	M22 M24	55
FD1700	T1700	T1700T			M27	M30	76

### 2. Lengthen Adjustable Reaction Arm

**Notes:** Radially adjustable distance length. Axially customize extensions for use. When a countersunk nut is encountered as a fulcrum, the socket shown in the illustration can be optionally fitted to the C end of the rod for use.



Model	Applicable to machine model				A (mm)	B (mm)
FTC500	T300	T500	TD400	TD600	57	86
FTC700	T700A	TD800	TC800	TD800	67	106
FTC1000	T1000A	TD1200	TC1200	TCD1200	67	106
	T2000NA	TD800	TC2000	TCD2000		



## Special Reaction Arm

### 4. Height Adjustable Reaction Arm(Applicable to lengthen reaction arm)

**Notes:** Height adjustable reaction arm, install A side of the L-shaped force arm onto the main part, applicable to where lengthen socket is used. Install D side of the L-shaped force arm onto the main part to enlength the force arm. Also, applicable to various of bolt installation field by shaped rod connect to force arm with different length.

Model	Applicable to machine model	
FSG500	T300	T500
	TD400	TD600
FSG700	T700A	TD800
	TC800	TCD800

### 3. Liner Reaction Arm

230mm (Customize Length)

Model	Applicable to machine model
FY500	T300、T500、TD400、TD600
FY700	T700A、TD800、TC800、TCD800

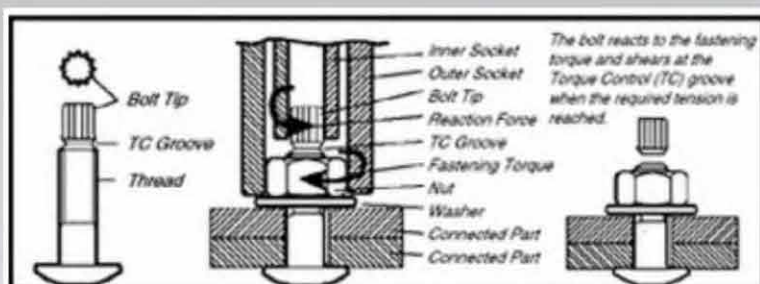
## Electric Shear Wrench (Applied to 10.9 High Strength Bolt M16, M20, M22, M24, M27, M30 installation)

### The Feature and Application of Shear Wrench:

Shear wrench is a necessary tool for torque-shear bolt tightening operation, to ensure high axial tension and torque accuracy, cutting off the bolt tip to complete tightening, which is simple and convenient. It is widely used in steel structure, bridge construction, electric power construction (power generation equipment installation), steel, petrochemical, railway and other fields.



Shanghai National Convention and Exhibition Center



Model	10.9 High Strength Bolt	Input Power (W)	Torque Control Range N·m	Unloaded Rotation r/min	External dimensions of the machine (mm)					Weight (Kg)
					A	B	C	D	E	
H20	M20 M16	650	600	22	235	105	68	58	250	4.9
H22	M22 M20 M16	650	805	18	250	120	75	58	250	5.3
H24	M24 M22 M20 M16	1200	1300	19	300	135	85	68	250	7.2
H30	M30 M27 M24	650	2000	5	275	130	100	85	260	7.3



## Initial Tightening Electric Shear Wrench

TC high strength bolts tightening process is initial tightening following by final screwing. Initial tightening torque is decided by 30-60% of the final tightening torque. The purpose is to to enhance sufficient adhesion of the interconnected plates and then starts final tightening.



HC-24A



HC-30

Category	Model	Input Power (W)	Torque Control Precision	10.9 High Strength Bolt	Unloaded Rotation r/min	Socket with machine	Weight (Kg)
Initial Tightening Shear Wrench	HC-24A	650	±15%	M16.M20.M22.M24	110	M24 M22	4.7
Initial Tightening Shear Wrench	HC-30	650	±15%	M27 M30	18	M30 M27	7.3



China Pavilion at World Expo



Project Skyeye



## Initial Tightening Electric Torque Control Wrench

High strength bolts tightening process is initial tightening following by final screwing. Initial tightening torque is decided by 30-60% of the final tightening torque. The purpose is to to enhance sufficient adhesion of the interconnected plates and then starts final tightening.



TA-24



TA-30

Category	Model	Input Power (W)	Torque Control Precision	10.9 High Strength Bolt	Unloaded Rotation r/min	Socket with machine	Weight (Kg)
Initial Tightening Torque Wrench	TA-24	650	±15%	M16.M20.M22.M24	110	M24 M22	4.7
Initial Tightening Torque Wrench	TA-30	650	±15%	M27 M30	18	M30 M27	6.0

# 虎 啸®

Shear Wrench

Electric Torque Control Wrench



Shanghai National Convention and Exhibition Center

Shanghai Huxiao Power Tools Co., Ltd

Address: No 150 Lane 3740, Huaning Road, Minhang District, Shanghai, China

Telephone: +86-21-34074303 +86-21-64893273

Website: <http://www.huxiao.net>

E-mail: [sales@huxiao.net](mailto:sales@huxiao.net)