



勃兰姆斯基摩擦材料（杭州）有限公司  
Bremskerl Friction Materials (Hangzhou) Co., Ltd.

电话：0571-85060396

传真：0571-81952383

邮箱：bkcsales@bremskerl.com

网址：www.bremskerl.com.cn

工厂地址：浙江省杭州市富阳区新登镇永隆路18号

Tel: 0571-85060396

Fax: 0571-81952383

E-mail: bkcsales@bremskerl.com

Website: www.bremskerl.com.cn

Address: No.18, Yonglong Road, Xingdeng Town, Fuyang District,  
Hangzhou City, Zhejiang Province



BREMSKERL 勃兰姆斯基摩擦材料  
微信扫描二维码，关注公众号

Bremskerl Friction Materials (Hangzhou) Co., Ltd.  
Scan with WeChat to follow us

**BREMSKERL FRICTION MATERIALS**

**勃兰姆斯基摩擦材料**



**BREMSKERL**

始自1929年的摩擦材料制造商  
Friction materials manufacturer since 1929





工业领域  
Industrial Applications



商用车辆  
Commercial Vehicles



铁路车辆  
Rail Vehicles

BRAND HISTORY  
品牌历史

**1929**  
创建“艾默林北德制动带公司”。  
Foundation of Norddeutsche Bremsbandwerke Emmerling & Co. KG



**1990**  
迁入Estorf-Leeseringen工业园。  
New plant at Estorf-Leeseringen

**2010**  
中国子公司在杭州成立，开始独立运营。  
First subsidiary in Hangzhou, China



**2024**  
杭州富阳新厂投产，公司整体迁回杭州，以“勃兰姆斯基摩擦材料（杭州）”之名全新亮相。  
Renamed as "BREMSKERL Friction Materials (Hangzhou)" at the new plant in Fuyang, Hangzhou

1929 1969 1990 2010 2022 2024



**1969**  
更名为“勃兰姆斯基摩擦材料艾默林”公司。  
Renamed as BREMSKERL-REIBBELAGWERKE EMMERLING GMBH & CO. KG



**2022**  
为深耕国内市场，BREMSKERL中国在湖州开启生产研发新征程。  
Start of production and R&D in Huzhou, China





## APPLICATION AREA INDUSTRIAL APPLICATIONS

### 应用领域:工业领域

BREMSKERL作为百年德资企业，在工业应用领域积累了300多种材料和配方，上万个产品型号。庞大的产品和研发数据库，使我们的新产品开发速度和产品性能始终领先于同行业。

BREMSKERL中国拥有齐全的自动化加工设备和成熟完整的供应链体系，为客户定制生产各种形状和尺寸的摩擦片。同时配套提供含钢背、底座、芯片、转子及各种附件的摩擦片总成。

As a century-old German enterprise, BREMSKERL has accumulated over 300 types of material formulations and tens of thousands of products in the field of industrial applications. Our extensive product and R&D database enables us to consistently lead the industry in new product development and product performance.

BREMSKERL China is equipped with advanced automated processing facilities and a mature, stable supply chain system, enabling us to custom-manufacture brake lining in a wide range of shapes and sizes. We also offer complete brake lining assemblies, including backing plates, carriers, inserts, rotors, and various accessories.



## 风电制动

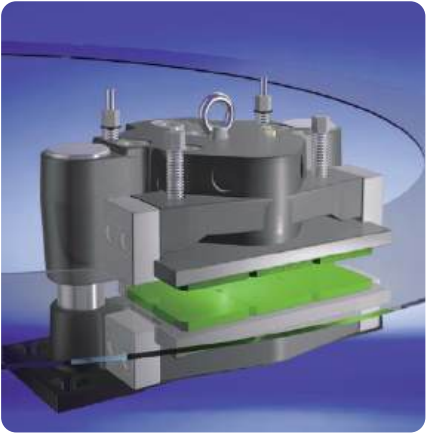
WIND TURBINE ENGINEERING

◎ 偏航制动器  
Yaw Brakes

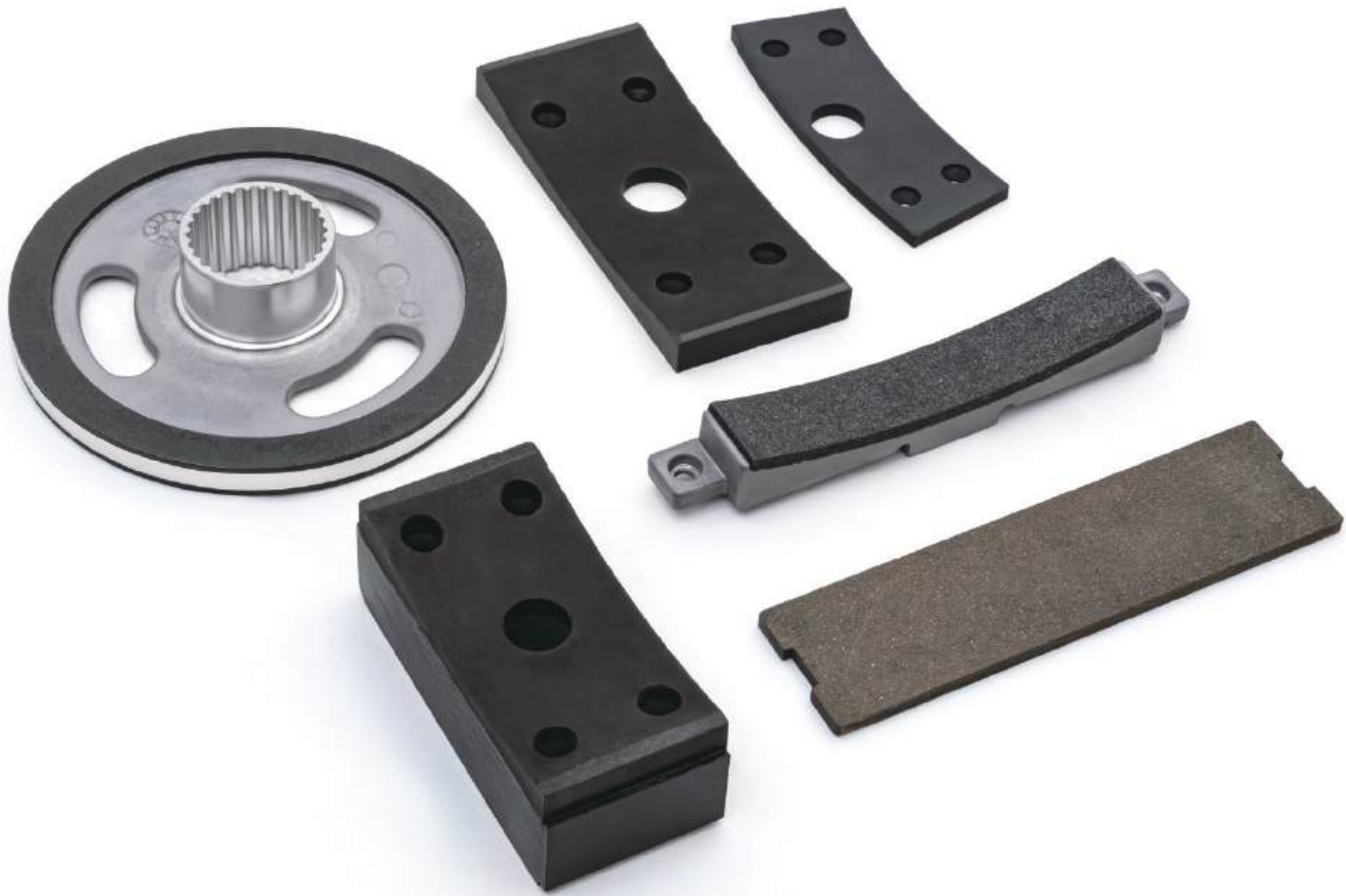
◎ 发电机制动器  
Generator Brakes

◎ 变桨制动器  
Pitch Brakes

◎ 转子制动器  
Rotor Brakes







## 机器人与自动化

ROBOTICS AND AUTOMATION

- ◎ 伺服电机  
Servo Motor
- ◎ 机器人关节控制  
Robotic Joint Control
- ◎ 自动化生产线  
Automated Production Line
- ◎ 伺服刀库  
ATC

## 驱动技术

DRIVE TECHNOLOGY

- ◎ 电梯  
Elevator
- ◎ 升降机  
Lift
- ◎ 减速机  
Gear Reducer
- ◎ 立体车库  
Stereoscopic Garage







## 工程机械

CONSTRUCTION MACHINERY

◎ 挖掘机  
Excavator

◎ 叉车  
Forklift

◎ 高空作业车  
Aerial Work Platform



## 压制、输送和提升

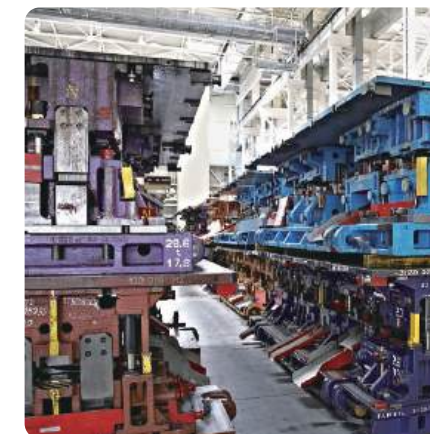
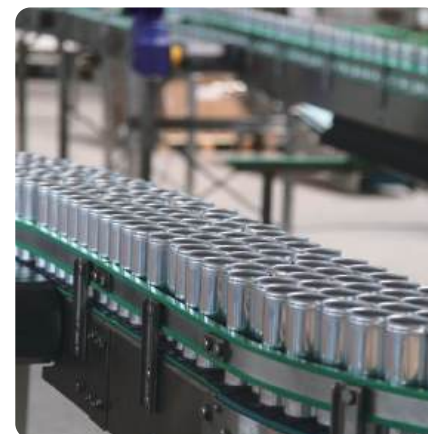
PRESS, CONVEYOR AND LIFTING TECHNOLOGY

◎ 起重制动器  
Crane Brakes

◎ 锻造压力机  
Forging Press

◎ 输送带系统  
Conveyor Belt System

◎ 输送带鼓  
Conveyor Pulley







代步车  
SCOOTER

- ◎ 观光车  
Sightseeing Vehicles
- ◎ 电动轮椅  
Electric Wheelchairs
- ◎ 高尔夫球车  
Golf Carts

通用机械  
GENERAL MACHINERY

- ◎ 园林机械  
Garden Machinery
- ◎ 造纸和包装  
Papermaking and Packaging
- ◎ 港机船舶制动  
Brake Device in Port Machinery





## APPLICATION AREA RAIL VEHICLES 应用领域: 铁路车辆

BREMSKERL 闸片和闸瓦已经被成功应用于全球客运列车、货运车辆、机车车辆、城市轨道交通系统、磁悬浮、摆渡系统和高速列车。

BREMSKERL brake pads and brake shoes are widely applied across the globe passenger trains, freight vehicles, locomotives, urban rail systems, maglev trains, shuttle systems, and high-speed rail.



### 配套全球车型 Supplied for Global Vehicle Models

- 在我们的客户中有众多国际铁路公司，包括德国联邦铁路、意大利、土耳其、比利时、奥地利国家铁路公司、美国国铁 Amtrak、荷兰国铁 Nedtrain 以及西班牙国铁 Renfe 等。
- 在中国，我们不仅直接提供用于客车、货车和地铁的各类闸片闸瓦，也同国内合作伙伴开展深度合作，提供全套产品解决方案。在货运领域，从2008年起，我们的材料和技术就已在工况条件最严苛的大秦线上得到了充分验证和应用。
- Our high-performance products are recognized by leading international railway operators, including Deutsche Bahn (Germany), Trenitalia (Italy), TCDD (Turkey), SNCB (Belgium), ÖBB (Austria), Amtrak (USA), NedTrain (Netherlands), and Renfe (Spain).
- In China, BREMSKERL not only supplies a full range of brake pads and brake shoes for passenger, freight, and metro applications, but also collaborates with local partners to deliver complete, customized solutions. Since 2008, our materials and technologies have been thoroughly tested and successfully applied on the Daqin Line with the most demanding operating environments.



### 国际质量认证 International Quality Certification

- BREMSKERL 铁路产品基于世界最高质量标准，通过了UIC认证，IRIS认证等多种铁路准入认证，获得了德国联邦铁路Q1级供应商证书，得到了众多客户的认可。
- 我们在1:1动态试验台上对摩擦材料进行模拟环境测试，包括高热、低温以及冰雪环境，还会根据世界各地不同的气候环境进行细节调整。
- 为保证客户安全使用，我们对产品还进行了极限荷载测试。在耐久性试验台上，最高时速可达520公里。
- BREMSKERL railway products are developed to meet the world's highest quality standards and have earned key international certifications, including UIC and IRIS. As a Q1-level certified supplier to DB, we are trusted by railway operators worldwide.
- To ensure top performance, our friction materials undergo rigorous testing on full-scale dynamic benches — simulating extreme conditions such as high heat, freezing temperatures, and snow. We also fine-tune product performance to suit different climate conditions around the world.
- To ensure safe operation for our customers, we conduct extreme load testing, and our test bench is capable of simulating speeds of up to 520 km/h.

### 产品环保创新 Eco-friendly Product Innovation

- BREMSKERL 产品至今已包含了15%的可再生材料，我们还在不断提高这一比例。
- 在生产过程中，BREMSKERL使用了很多可循环材料，绝对不使用有毒矿物纤维、重金属、锑化物，也在减少铜的比例。
- Today, BREMSKERL products contain up to 15% renewable materials. And we are continuously working to increase this proportion.
- Our production process incorporates a wide range of recyclable materials. We strictly avoid toxic mineral fibers, heavy metals, and antimony compounds, and are actively reducing the use of copper to minimize environmental impact.



## APPLICATION AREA COMMERCIAL VEHICLES

### 应用领域：商用车辆

百年时间，车辆和车轴的生产商在OE和售后市场一直依赖性能一流的BREMSKERL刹车片。

For nearly a century, vehicle and axle manufacturers have relied on BREMSKERL's high-performance brake pads — both in the OE sector and the aftermarket.

## 市场应用 Market Applications

- 在商用车辆领域，BREMSKERL为卡车、拖车、巴士、起重车辆以及特种车辆设计并生产了不同尺寸的鼓式和盘式刹车片。
- BREMSKERL为刹车鼓直径约为400-420毫米商用车鼓式制动器提供刹车片，如梅赛德斯 Mercedes、曼MAN、斯堪尼亚Scania、雷诺Renault和沃尔沃Volvo。为直径为300-420毫米拖车提供鼓式制动片，如BPW、Gigant、SAE、SAF和SMB等公司生产的车轴上。
- In the commercial vehicle sector, BREMSKERL designs and manufactures drum and disc brake linings in various sizes for trucks, trailers, buses, lifting vehicles, and specialty vehicles.
- For drum brakes with diameters of approximately 400–420 mm, BREMSKERL supplies brake linings for commercial vehicles from leading brands such as Mercedes-Benz, MAN, Scania, Renault, and Volvo. We also provide high-quality drum brake linings for trailers with diameters ranging from 300 to 420 mm, used on axles from manufacturers such as BPW, Gigant, SAE, SAF, and SMB.

## 产品优势 Product Advantages

- BREMSKERL刹车片以优秀的制动性能确保了稳定的高摩擦系数和低磨损率。此外，产品使用寿命长、安全性高、舒适度高，可以满足巴士、特种车辆等城市交通的最高要求。
- BREMSKERL的鼓式和盘式刹车片，按照欧洲标准ECE R13和ECE R90进行产品测试。我们和权威的德国检测机构合作，如TÜV 南德慕尼黑、TÜV北德埃森以及KBA 德国联邦机动车辆管理局，完成产品测试并获得放行认可。
- BREMSKERL delivers excellent braking performance, ensuring a stable high friction coefficient and low wear rate. With long service life, high safety, and enhanced driving comfort, they meet the highest demands of urban transport applications such as buses and special vehicles.
- Our drum and disc brake linings are tested in accordance with European standards ECE R13 and ECE R90. We collaborate with leading German certification bodies, including TÜV SÜD Munich, TÜV NORD Essen, and the German Federal Motor Transport Authority (KBA), to ensure product testing and official approval.







## TESTING CENTER

### 实验中心

#### 品质至上 Quality First

- BREMSKERL始终追求质量“零缺陷”的目标，对物料管控、生产过程和出厂检验坚持精益求精的德企标准。
- BREMSKERL建立了世界一流研发和测试实验室。材料和产品在生产研发中，按照ISO15484国际标准经过了严格测试和验证，包括高低温、潮湿、盐雾等严苛环境，保证产品出色的摩擦性能与稳定性。
- 借助 BREMSKERL集成质量管理体系与批次标识系统，保证整个生产和采购过程的可追溯性。
- BREMSKERL is committed to a "zero-defect" quality goal, adhering to the meticulous standards of German manufacturing in material control, production processes, and final inspection.
- BREMSKERL has established world-class R&D and testing laboratories. All materials and products undergo strict testing and validation in accordance with ISO 15484, including exposure to extreme temperatures, humidity, and salt spray — ensuring outstanding friction performance and long-term stability.
- With our integrated quality management system and batch traceability system, we ensure full transparency and traceability across the entire production and supply chain.

#### 绿色环保 Environmentally Sustainable

- BREMSKERL非常重视环保和可持续发展，在保证安全、可靠、耐用的前提下，产品研发优先选择环保和可循环材料，着力降低噪音粉尘，绝对不使用有毒有害材料和重金属，并在可再生能源领域持续投入。
- BREMSKERL places great emphasis on environmental protection and sustainability. While ensuring safety, reliability, and durability, our product development prioritizes eco-friendly and recyclable materials. We focus on reducing noise and dust emissions, strictly avoid the use of toxic and hazardous substances as well as heavy metals, and continue to invest in the field of renewable energy.

