



2024 FTTx SOLUTION

武汉驿路通科技股份有限公司
Wuhan Yilut Technology Co., Ltd

CONTACT US

Address: Yilut Technology Park, 7 Fozuling First Road,
East Lake Hi-tech Zone, 430200, Wuhan, China

Tel: +86-27-87808676 / 87808988

Email: sales@yilut.com

Website: www.yilut.com

FTTx SOLUTION
Wuhan Yilut Technology Co., Ltd



Company Profile

Wuhan Yilut Technology, rooted in China Optics Valley for over 20 years, has developed into a leading enterprise in the optical communication and optical sensing industries, specializing in the research, development, and production of passive optical devices.

The company manufactures products such as Optical Distribution Frame (ODF), Fiber Array (FA), Wavelength Division Multiplexing (WDM), Fiber Bragg Grating (FBG), and SiPhi OE (Optical Engine). These products have been widely applied in various fields, including FTTx, data centers, 5G, fiber optic sensing, silicon photonics, LiDAR, and remote healthcare.

Wuhan Yilut Technology aims to serve customers worldwide across different industries by providing advanced and reliable solutions and optical equipment.

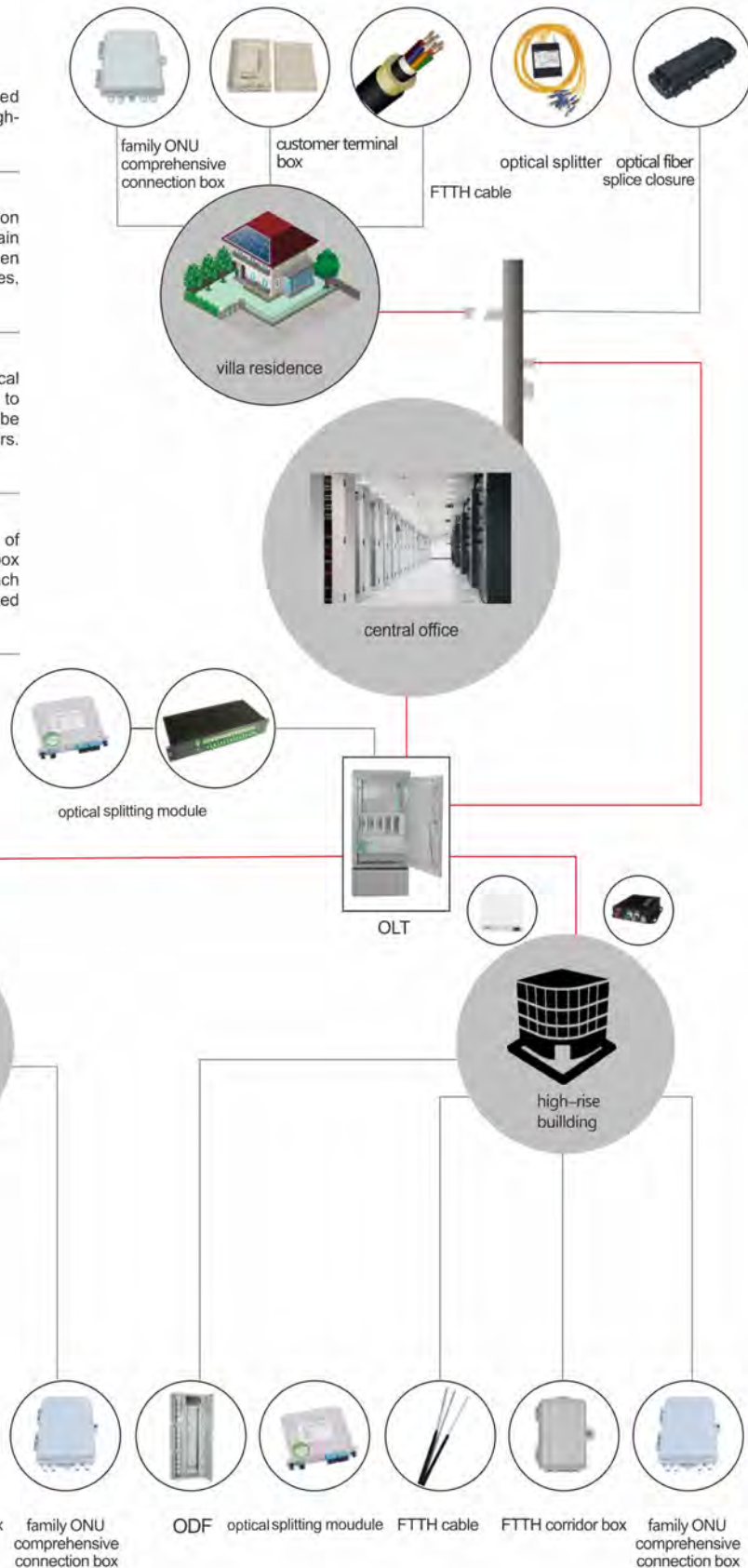
Fiber to the home

FTTH (Fiber to the Home) aims to provide high-speed broadband to customers. There are different solutions for high-rise buildings and villa residences.

For high-rise buildings: A high-capacity Optical Distribution Frame (ODF) with splitters is used in the building's main distribution room to perform splitting. The optical signal is then routed to individual customer units via underground boxes, utilizing an Optical Network Unit (ONU) termination box.

For multi-story buildings: Splitting can be done at the optical cable junction box near the residential area, and then routed to the building's fiber distribution box. A secondary splitting can be performed at the distribution box to individually serve customers. An ONU termination box can also be used.

For villa residences: Optical fiber is extended to the vicinity of each villa residence through an optical cable distribution box equipped with splitters. The fiber is then connected to each household, utilizing customer terminal boxes that are connected to an ONU distribution box.



CONTENTS



Fiber Optic Distribution Box 01-04



Fiber Optic Splice Closure 05-08



Fiber Optic Distribution Unit 09-10



Optical Splitter 11-12



Patch Cord & Pigtail 13-14



Fiber Optic Cable 15



FBG Reflector 16



Accessories 17-21

YLT-F207



8 Cores Outdoor FTTH Box

Item No	Description
YLT-F207-SC	With 8 PCS SC Simplex Adaptor
YLT-F207-PLC	With 1 PCS 1X8 PLC

- Size:230*195*55mm
- Material:ABS/ABS+PC
- Colour:White,Black or Grey
- Waterproof:IP65
- For Both Cable Gland and Rubber Input

YLT-F208



16 Cores Outdoor FTTH Box

Item No	Description
YLT-F208	With 16 PCS SC Simplex Adaptor

- Size:300*220*80mm
- Material:ABS
- Colour:White,Black or Grey
- Waterproof:IP65
- For Both Cable Gland and Rubber Input

YLT-F209



16 Cores Outdoor FTTH Box

Item No	Description
YLT-F209	With 2PCS 1X8 PLC Or 1PCS 1X16PLC

- Size:300*220*80mm
- Material:ABS
- Colour:White,Black or Grey
- Waterproof:IP65
- For Both Cable Gland and Rubber Input

YLT-F210



16 Cores Outdoor FTTH Box

Item No	Description
YLT-F210-SC	With 16 PCS SC Simplex Adaptor
YLT-F210-PLC	With 2PCS 1X8 PLC Or 1PCS 1X16 PLC

- Size:300*220*80mm
- Material:ABS
- Colour:White,Black or Grey
- Waterproof:IP65
- For Both Cable Gland and Rubber Input

YLT-F211



24 Core Outdoor FTTH Box

Item No	Description
YLT-F211	With 24 PCS SC Simplex Adaptor
YLT-F211	With 2PCS 1X8 PLC Or 1PCS 1X16 PLC

- Size:330*275*100mm
- Material:ABS
- Colour:White,Black or Grey
- Waterproof:IP65
- For Both Cable Gland and Rubber Input

YLT-F212



24 Core Outdoor FTTH Box

Item No	Description
YLT-F212	With 24 PCS SC Simplex Adaptor
YLT-F212	With 2PCS 1X8 PLC Or 1PCS 1X16 PLC

- Size:330*275*100mm
- Material:ABS
- Colour:White,Black or Grey
- Waterproof:IP65
- For Both Cable Gland and Rubber Input

YLT-F213



12 Cores Outdoor FTTH Box

Item No	Description
YLT-F213	With 12 PCS SC Simplex Adaptor

- Size:260*210*90mm
- Material:ABS/ABS+PC
- Colour:White,Black or Grey
- Waterproof:IP65
- For Both Cable Gland and Rubber Input

YLT-F214

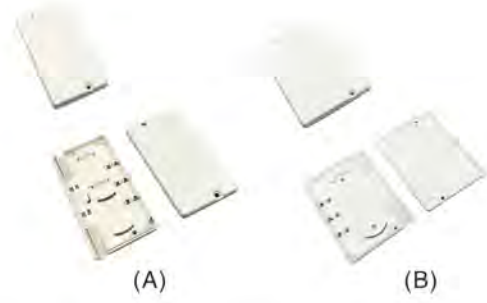


8 Cores Outdoor FTTH Box

Item No	Description
YLT-F214	With 1PCS 1X8 PLC

- Size:260*210*90mm
- Material:ABS/ABS+PC
- Colour:White,Black or Grey
- Waterproof:IP65
- For Both Cable Gland and Rubber Input

YLT-F301



2 or 4 cores Fiber optic termination box

Item No	Description
YLT-F301-A	2Core FTTH Box
YLT-F301-B	4Core FTTH Box

- A Size:94*45*11mm
- B Size:94*68*11mm
- Waterproof:IP65

YLT-F302



1 Cores Fiber optic termination box

Item No	Description
YLT-F302	1Core FTTH Box

- Size:94*85*30mm
- Box Suitable 1PC SC Simplex Adaptor
- Adapter type:SC/LC/FC
- Inlter cable:3.0x2.0mm drop cable or indoor cable

YLT-F303



2 Cores Fiber optic termination box

Item No	Description
YLT-F303	2 Core FTTH Box

- Size:135*90*26mm
- Adapter type:SC/LC/FC
- Inlter cable:3.0x2.0mm drop cable or indoor cable

YLT-F304



2 Cores Fiber optic termination box

Item No	Description
YLT-F304	2 Core FTTH Box

- Size:100*84*25mm
- Adapter type:SC/LC/FC
- Inlter cable:3.0x2.0mm drop cable or indoor cable



YLT-F305



1 /2Cores Fiber optic termination Box

Item No	Description
YLT-F305	1-2 Core FTTH Box

- Size:116*86*23mm
- Adapter type:SC/LC/FC
- Inlter cable:3.0x2.0mm drop cable or indoor cable



YLT-F306



2 Cores Fiber optic termination Box

Item No	Description
YLT-F306	2 Core FTTH Box

- Size:102*79*25mm
- Adapter type:SC/LC/FC
- Inlter cable:3.0x2.0mm drop cable or indoor cable

YLT-F307



4 Cores Fiber optic termination Box

Item No	Description
YLT-F307	4 Core FTTH Box

- Size:100*84*30mm
- Adapter type:SC/LC/FC
- Inlter cable:3.0x2.0mm drop cable or indoor cable

YLT-F308



4 Cores Fiber optic termination Box

Item No	Description
YLT-F308	4 Core FTTH Box

- Size:100*84*30mm
- Adapter type:SC/LC/FC
- Inlter cable:3.0x2.0mm drop cable or indoor cable

YLT-F009



288C Fiber Optic Splice Closure

Item No	Description
YLT-F009-144C	With 3PCS 48C Splicing Tray
YLT-F009-288C	With 6PCS 48C Splicing Tray

- Size: 560mmx240mmx130mm
- Material: PP or PC
- Ports: 3 inlet 3 outlet
- The Core Capacity Of Each Splice Tray is 48Cores

YLT-F010



96C Fiber Optic Splice Closure

Item No	Description
YLT-F010-24C	With 1PCS 24C Splicing Tray
YLT-F010-48C	With 2PCS 24C Splicing Tray
YLT-F010-96C	With 4PCS 24C Splicing Tray

- Size: 440mmx170mmx110mm
- Material: PP/ABS/PC
- Ports: 2 inlet 2 outlet

YLT-F011



96C Fiber Optic Splice Closure

Item No	Description
YLT-F011-48C	With 2PCS 24C Splicing Tray
YLT-F011-96C	With 4PCS 24C Splicing Tray

- Size: 430mmx190mmx110mm
- Material: PP/ABS/PC
- Ports: 2 inlet 2 outlet

YLT-F012



144C Fiber Optic Splice Closure

Item No	Description
YLT-F012-96C	With 4PCS 24C Splicing Tray
YLT-F012-144C	With 6PCS 24C Splicing Tray

- Size: 430mmx190mmx140mm
- Material: PP/ABS/PC
- Ports: 2 inlet 2 outlet

YLT-F101H



24/48C Fiber Optic Splice Closure

Item No	Description
YLT-F101H-24C	With 4PCS 6C Splicing Tray
YLT-F101H-48C	With 4PCS 12C Splicing Tray

- Size: 300mm(h)x190mm(d)
- Material: PP
- Ports: 1 inlet 3 outlet
- Structure: Heat shrinkable sealing

YLT-F101M



24/48C Fiber Optic Splice Closure

Item No	Description
YLT-F101M-24C	With 4PCS 6C Splicing Tray
YLT-F101M-48C	With 4PCS 12C Splicing Tray

- Size: 300mm(h)x190mm(d)
- Material: PP
- Ports: 2 inlet 2 outlet
- Structure: Mechanical seal

YLT-F102H



48/96/144C Fiber Optic Splice Closure

Item No	Description
YLT-F102H-48C	With 2PCS 24C Splicing Tray
YLT-F102H-96C	With 4PCS 24C Splicing Tray
YLT-F102H-144C	With 6PCS 24C Splicing Tray

- Size: 420mm(h)x205mm(d)
- Material: PP
- Ports: 1 inlet 3 outlet
- Structure: Heat shrinkable sealing

YLT-F107H



96/144/288C Fiber Optic Splice Closure

Item No	Description
YLT-F107H-96C	With 2PCS 48C Splicing Tray
YLT-F107H-96C	With 4PCS 24C Splicing Tray
YLT-F107H-144C	With 3PCS 48C Splicing Tray
YLT-F107H-144C	With 6PCS 24C Splicing Tray
YLT-F107H-288C	With 6PCS 48C Splicing Tray

- Size: 470mm(h)x220mm(d)
- Material: PP
- Structure: Heat shrinkable sealing
- Ports: 1 inlet 4 outlet
- If you need 96core(with 2 pcs 48C splicing tray)it is available

YLT-F108H



96/144C Fiber Optic Splice Closure

Item No	Description
YLT-F108H-48C	With 2PCS 24C Splicing Tray
YLT-F108H-96C	With 4PCS 24C Splicing Tray
YLT-F108H-144C	With 6PCS 24C Splicing Tray

- Size: 470mm(h)x220mm(d)
- Material: PP
- Structure: Heat shrinkable sealing
- Ports: 1 inlet 4 outlet

YLT-F108M



96/144C Fiber Optic Splice Closure

Item No	Description
YLT-F108M-48C	With 2PCS 24C Splicing Tray
YLT-F108M-96C	With 4PCS 24C Splicing Tray
YLT-F108M-144C	With 6PCS 24C Splicing Tray

- Size: 470mm(h)x220mm(d)
- Material: PP
- Structure: Heat shrinkable sealing
- Ports: 2 inlet 4 outlet

YLT-F200-A



16 Cores Outdoor FTTH Box

Item No	Description
YLT-F200-A	With 24 PCS SC Simplex Adaptor

- Size: 385 (L)x240(W)X128(H)mm
- Material: PP+GF
- Intet/outlet Ports:4/16
- Waterproof: Ip68
- With 4pcs 24C tray Or 6pcs 24C tray

YLT-F200-B



16 Cores Outdoor FTTH Box

Item No	Description
YLT-F200-B	With 16 PCS SC Simplex Adaptor

- Size: 385 (L)x240(W)X128(H)mm
- Material: PP+GF
- Intet/outlet Ports:4/16
- Waterproof: Ip68

YLT-F200-C



16 Cores Outdoor FTTH Box

Item No	Description
YLT-F200-C	With 2 PCS 1X8 PLC or 1PCS 1X16 PLC

- Size: 385 (L)x240(W)X128(H)mm
- Material: PP+GF
- Intet/outlet Ports:4/16
- Waterproof: Ip68

YLT-F200-D



16 Cores Outdoor FTTH Box

Item No	Description
YLT-F200-D	With 24 PCS SC Simplex Adaptor

- Size: 385 (L)x240(W)X128(H)mm
- Material: PP+GF
- Intet/outlet Ports:4/16
- Waterproof: Ip68
- With 4pcs 24C tray

YLT-F403



4C Fiber Optic Patch Panel

Item No	Description
YLT-F403A-4C	With Front Panel For 4Pcs SC Simplex Adaptor
YLT-F403B-4C	With Front Panel For 4Pcs FC Simplex Adaptor

- Colour: Black or Light Grey
- size: 200*110*35mm

YLT-F405



12/24/48C Fiber Optic Patch Panel

Item No	Description
YLT-F405A-12C	With Front Panel For 12Pcs SC Simplex Adaptor
YLT-F405B-24C	With Front Panel For 24Pcs SC Simplex Adaptor
YLT-F405C-48C	With Front Panel For 48Pcs SC Simplex Adaptor

- Colour: Black or Light Grey
- size: 485 *210 *44mm
- Fixed with button

YLT-F407



12/24/48C Fiber Optic Patch Panel

Item No	Description
YLT-F407A-12C	With Front Panel For 12Pcs SC Simplex Adaptor
YLT-F407B-24C	With Front Panel For 24Pcs SC Simplex Adaptor
YLT-F407C-48C	With Front Panel For 48Pcs SC Simplex Adaptor

- Colour: Black or Light Grey
- size: 485 *340 *44mm

YLT-F408



12/24/48/96C Fiber Optic Patch Panel

Item No	Description
YLT-F408A-12C	With Front Panel For 12Pcs SC Simplex Adaptor
YLT-F408B-24C	With Front Panel For 24Pcs SC Simplex Adaptor
YLT-F408C-48C	With Front Panel For 48Pcs SC Simplex Adaptor
YLT-F408D-96C	With Front Panel For 96Pcs SC Simplex Adaptor

- Colour: Black or Light Grey
- size: 485 *340 *44mm

YLT-F511



12 Core ODF

YLT-F512



24 Core ODF

YLT-F513



48 Core ODF

YLT-F514



72 Core ODF

YLT-F515



96 Core ODF

YLT-F516



144 Core ODF

PLC Splitter Mini Type



PLC Splitter mini-package with 250um bare fiber

Fiber type	G657A1, G757A2, G657B3
Channel	From 1x2, 2x2 up to 1x128, 2x128
Package	Stainless mini case
Fiber Jacket	250um bare, 900um tubing
Working temperature	-40°C to +85°C
Standard	Telcordia GR1209 & Telcordia GR1221

PLC Splitter FTTR Module



PLC Splitter mini-package with 250um bare fiber

Fiber type	G657A1, G757A2, G657B3
Channel	From 1x2, 2x2 up to 1x128, 2x128
Package	ABS Box
Fiber Jacket	900um, 1.6mm, 2mm, 3mm
Working temperature	-40°C to +85°C
Standard	Telcordia GR1209 & Telcordia GR1221

PLC Splitter Module Type



PLC Splitter mini-package with 250um bare fiber

Fiber type	G657A1, G757A2, G657B3
Channel	From 1x2, 2x2 up to 1x32, 2x32
Package	Plastic cassette box
Adaptor	SC, LC
Working temperature	-40°C to +85°C
Standard	Telcordia GR1209 & Telcordia GR1221

PLC Splitter Cassette Type



PLC Splitter mini-package with 250um bare fiber

Fiber type	G657A1, G757A2, G657B3
Channel	1x4, 1x5, 1x9, 1x17
Package	Stainless mini case
Adaptor	SC, LC
Working temperature	-40°C to +85°C
Standard	Telcordia GR1209 & Telcordia GR1221

PLC Splitter LGX Type



PLC Splitter LGX Box Packaged

Fiber type	G657A1, G757A2, G657B3
Channel	From 1x2, 2x2 up to 1x128, 2x128
Package	Aluminum box
Adaptor	SC, LC, MPO or customized
Working temperature	-40°C to +85°C
Standard	Telcordia GR1209 & Telcordia GR1221

PLC Splitter Rack Mount



PLC Splitter 19" Rack Mount Packaged

Fiber type	G657A1, G757A2, G657B3
Channel	From 1x2, 2x2 up to 1x128, 2x128
Package	19" aluminum rack mount
Adaptor	SC, LC, MPO or customized
Working temperature	-40°C to +85°C
Standard	Telcordia GR1209 & Telcordia GR1221

FBT Coupler SM Type



FBT Coupler Single-mode

Wavelength	1310, 1490, 1550
Fiber type	G652D, G657A1, G657A2
Channel	1x2, 2x2, 1x3, 1x4, 1x8, 4x4, 8x8 Available to be customized
Package	Stainless mini case or ABS box
Splitting Ratio	10:90, 20:80, 30:70, 40:60, 50:50 Available to be customized
Standard	Telcordia GR1209 & Telcordia GR1221

FBT Coupler MM Type



FBT Coupler Cascaded and ABS Box Packaged

Wavelength	850, 1310
Fiber type	50/125, 62.5/125
Channel	1x2, 2x2, 1x3, 1x4, 1x8, 4x4, 8x8 or customized
Package	ABS box
Splitting Ratio	10:90, 20:80, 30:70, 40:60, 50:50 Available to be customized
Standard	Telcordia GR1209 & Telcordia GR1221

Simplex Patch Cord



Duplex Patch Cord



Simplex Pigtail



12F Pigtail Group



MPO Patch Cord



E2000 Patch Cord



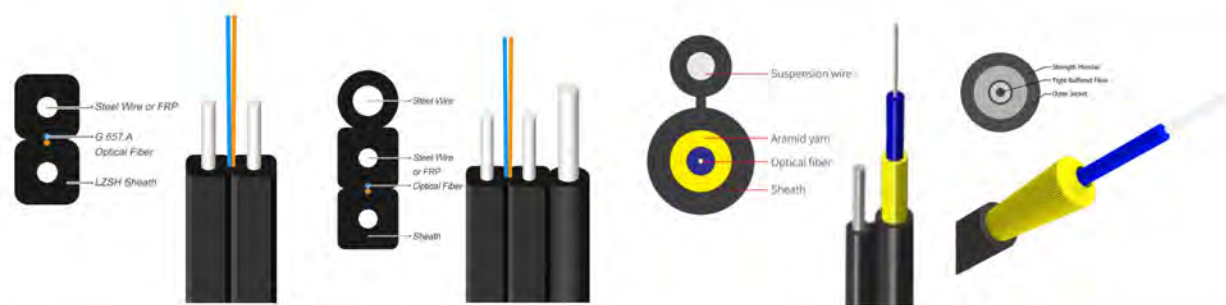
FTTH Drop Cable Patch Cord and Pigtail



Armored Fiber Optic Patch Cable



FTTH Drop Cable



Armored Indoor Cable



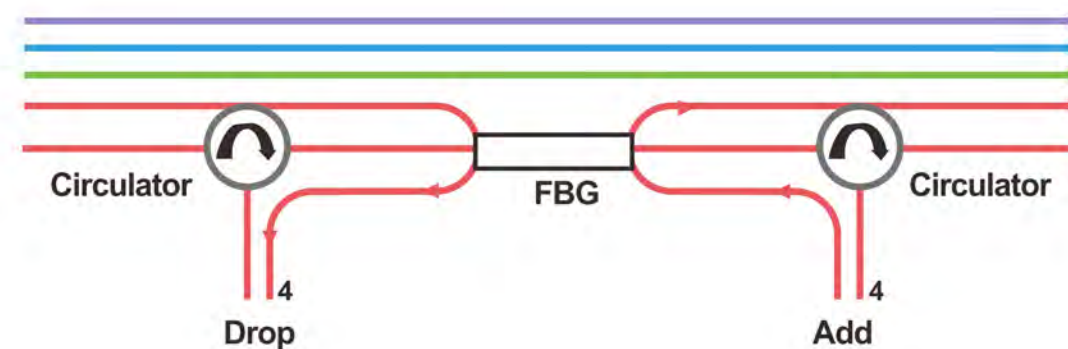
Aerial Outdoor Cable



Air Blown Cable



FBG Reflector



Features:

- Low insertion loss
- High stability and reliability
- Instead of real-time detection
- Compliant with RoHS
- Compliant with Telcordia GR-326-CORE, Telcordia GR-1221-CORE

Applications

- OTDR Test
- FBG Sensor
- Fiber Laser

FBG Reflector Pigtail Type 1650nm



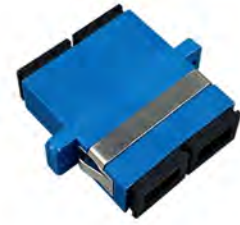
FBG Reflector Pluggable Type



YLT-N401



YLT-N402



YLT-N403



YLT-N404



YLT-N409



YLT-N410



YLT-N411



YLT-N412



YLT-N701



YLT-N702



YLT-N703



YLT-N704



YLT-N705



YLT-N706



YLT-N707



YLT-N708



YLT-N301



FacePlate
Size:86*86mm
Suitable For RJ45 Keystone jack add(E) suitable For sc lc

<E>

YLT-N302



FacePlate
Size:70*118mm
Suitable For RJ45 Keystone jack add(E) suitable For sc lc

<F>

YLT-N303



Fiber Faceplate Inclined
Size:86*86mm

YLT-N304



Fiber Optic Termination box
Size:86*86mm

YLT-N801



YLT-N802



YLT-N803



YLT-N804



YLT-N805



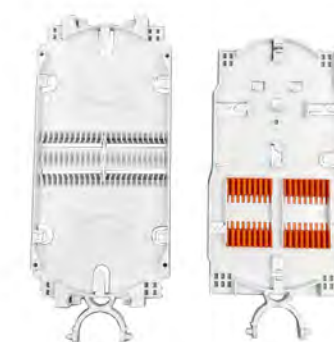
YLT-N806



YLT-N807



YLT-N808



YLT-N811



YLT-N812



YLT-N813



YLT-N814



YLT-N821



YLT-N822



YLT-N823



YLT-N824

