



# BREMSKERL-Since 1929

BREMSKERL Friction Materials (Huzhou) Co., Ltd.  
BREMSKERL (Hangzhou) Innova Materials Co., Ltd.

# ***BREMSKERL***

*Der Spezialist für Brems- und Kupplungsbeläge  
The specialist for brake and clutch linings*



# 历史History

- 1929:** Foundation of Norddeutsche Bremsbandwerke Emmerling & Co.
- 1969:** Renamed as BREMSKERL-REIBBELAGWERKE EMMERLING GMBH & CO. KG
- 1979:** First to offer non-asbestos friction materials within the industry
- 1990:** Construction of new plant at Estorf-Leeseringen
- Technology centre
  - Laboratory facilities
- 2004:** Expansion of the automatic mixing plant acquire 1:1 test bench







Today we produce from a manufacturing area of 24.000 m<sup>2</sup> to satisfy our worldwide business.  
We focus on providing specialist friction and braking solutions to customers for nearly 100 years

2023



# BREMSKERL China

**2006年:** BREMSKERL brake and clutch lining entered China market, started with a small sales office in Hangzhou

**2010年:** BREMSKERL Friction Materials (Huzhou) Co., Ltd. was established

**2022年:** Construction our own factory in Deqing Huzhou  
Renamed as BREMSKERL Friction Materials (Huzhou) Co., Ltd.

Today we produce from a manufacturing area of 4000m<sup>2</sup>. With more than 60 employees and a number of advanced automatic production lines, our annual production capacity is 2 million pieces. Meanwhile, we are equipped with professional physical and chemical laboratories and technical personnel, to achieve the integration of marketing, technology, research and development, production, sales and after-sales service.





Product range



Industrial applications 80%



Rail vehicles 15%

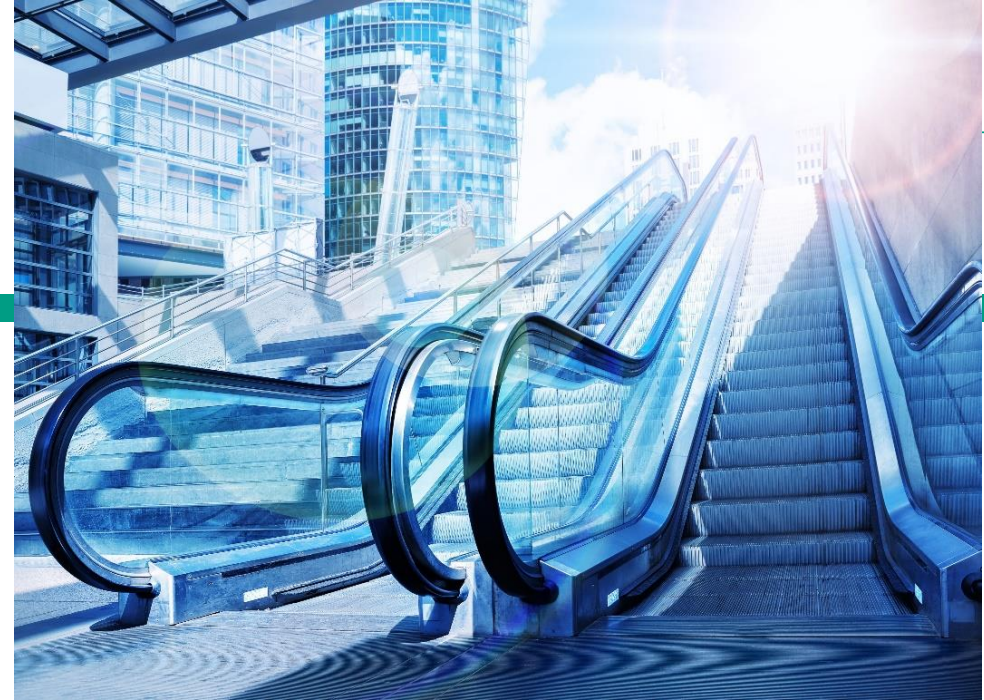


Commercial vehicles 5%



# Industrial applications

- Wind Energy
- Drive technology
- Ship-building
- Machinery construction
- Agricultural engineering
- Medical equipment
- Construction machines
- Press and conveyor technology





# Industrial Product

## Semi-finished products

- Plates
- Strips
- Rolls



## Customized products

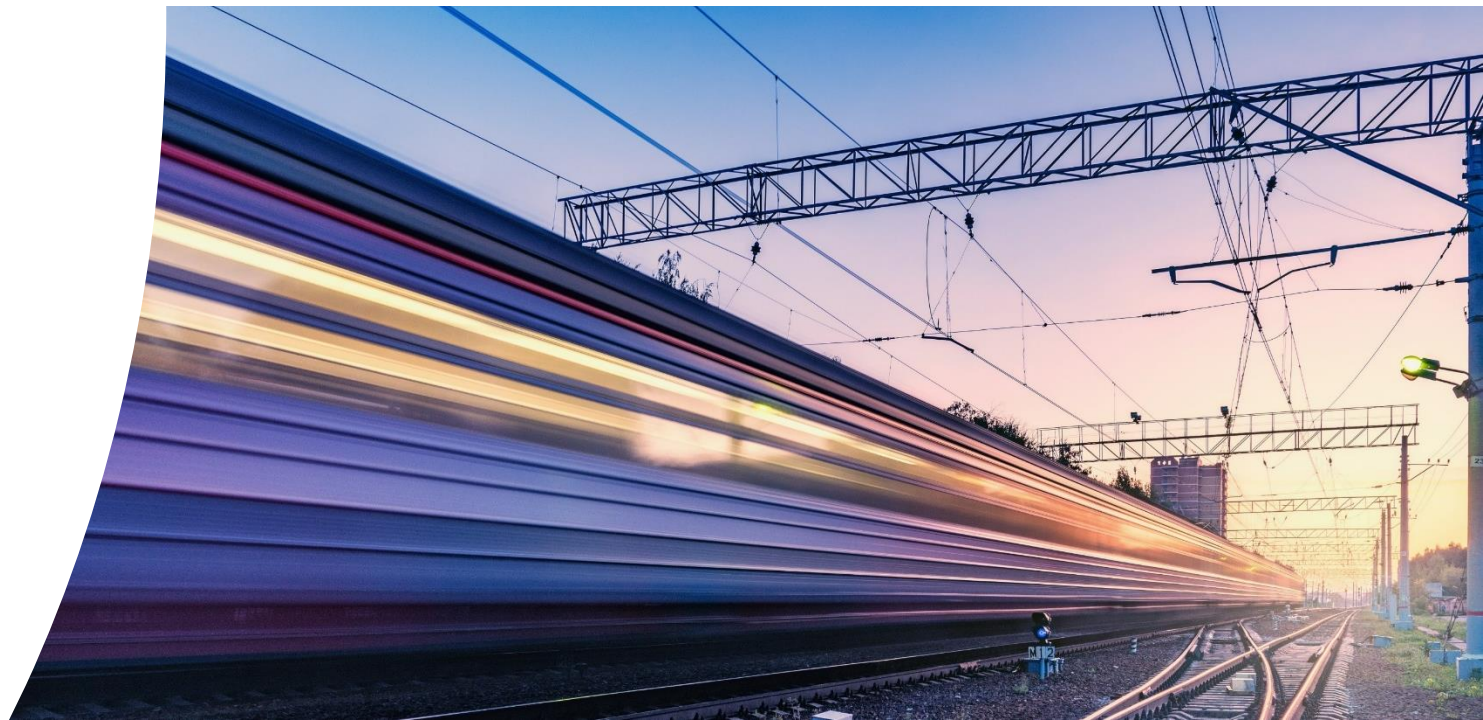
- Rings
- Segments
- Brake blocks
- Cones
- Outside linings



# Rail vehicles

Field of application:

- High-speed traffic
- Long distance traffic
- Short distance traffic
- Goods traffic





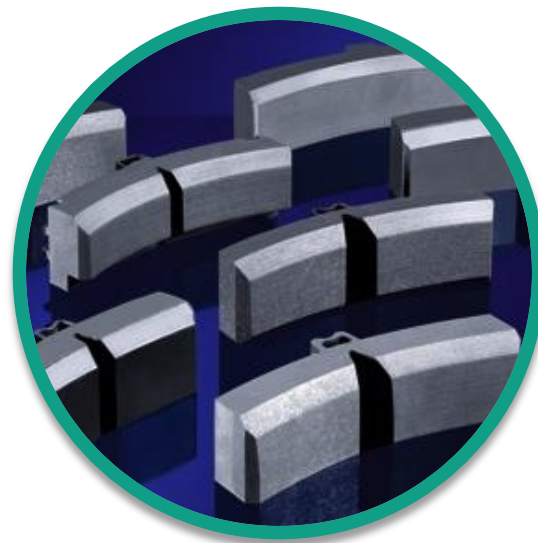
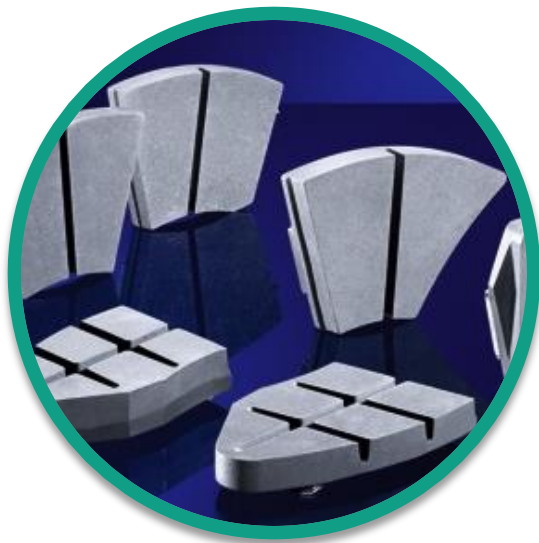
# Rail vehicles product range

# **BREMSKERL**

Der Spezialist für Brems- und Kupplungsbeläge  
The specialist for brake and clutch linings



- Disc brake pads
- Brake blocks



**IRIS**  
Certification



# Commercial vehicles

Field of application:

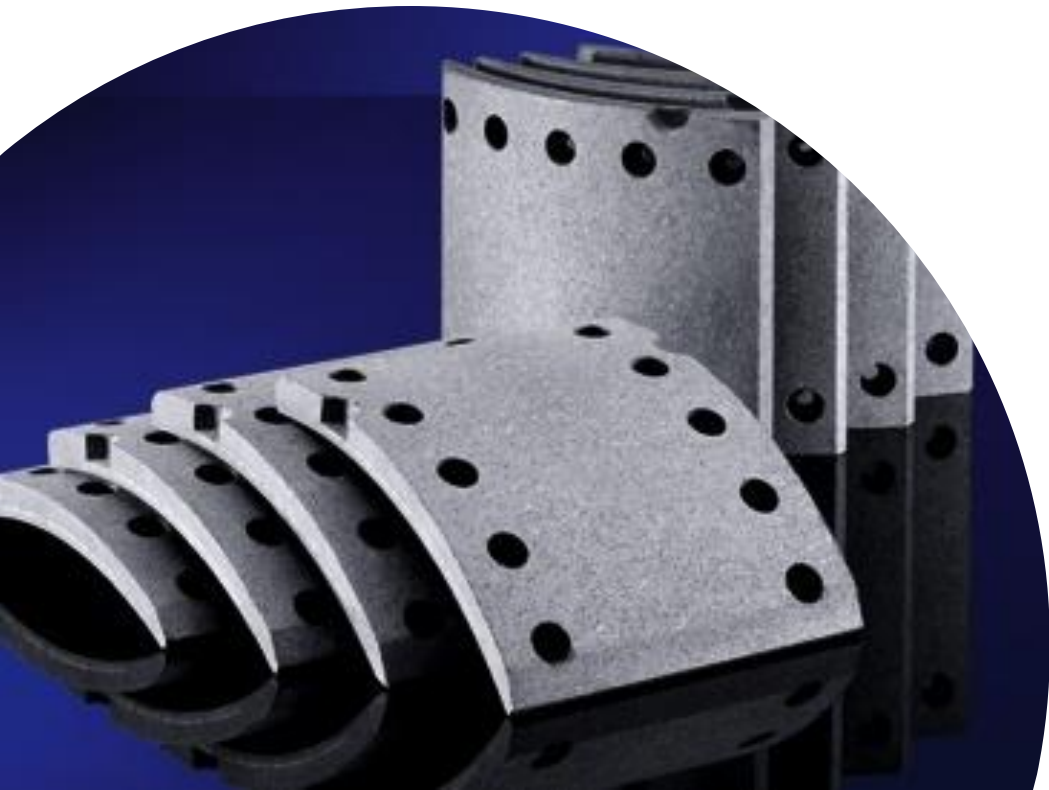
- Trucks
- Trailers
- Buses
- Crane vehicles
- Special vehicles





# **BREMSKERL**

Der Spezialist für Brems- und Kupplungsbeläge  
The specialist for brake and clutch linings



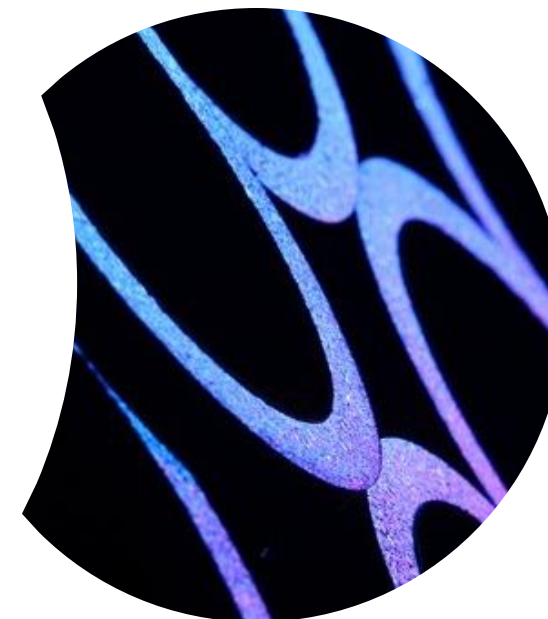
## Commercial vehicles product

- Disc brake pads
- Drum brake linings

# Thanks for your kind attention!

# **BREMSKERL**

Der Spezialist für Brems- und Kupplungsbeläge  
The specialist for brake and clutch linings



BREMSKERL Friction Materials (Huzhou) Co., Ltd.  
Add.: Plant No. 4, No. 2258, Baiyun Road, Leidian Town, Deqing  
County, Huzhou City, Zhejiang Province 313219 P. R. China  
Tel: 0571-85060396  
Fax: 0571-81952383  
Email: [bkcsales@bremskerl.com](mailto:bkcsales@bremskerl.com)